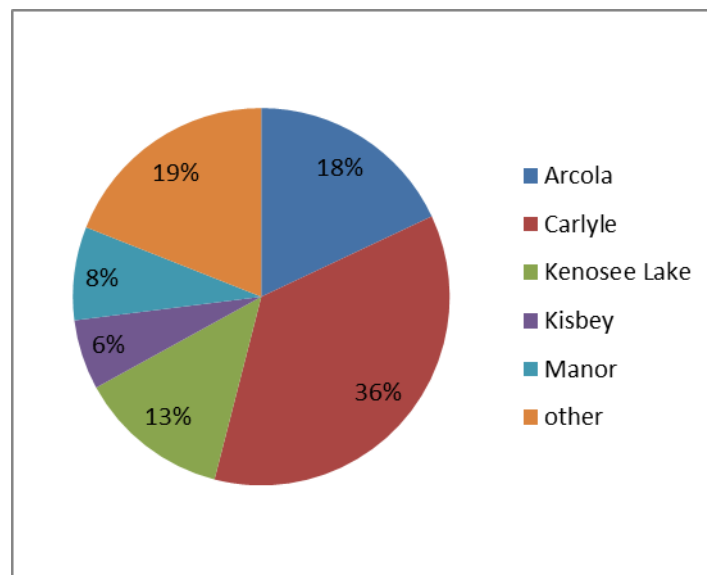


Carlyle Primary Health Care Community Needs Assessment

Question 1: Which community do you live in?

Demographics

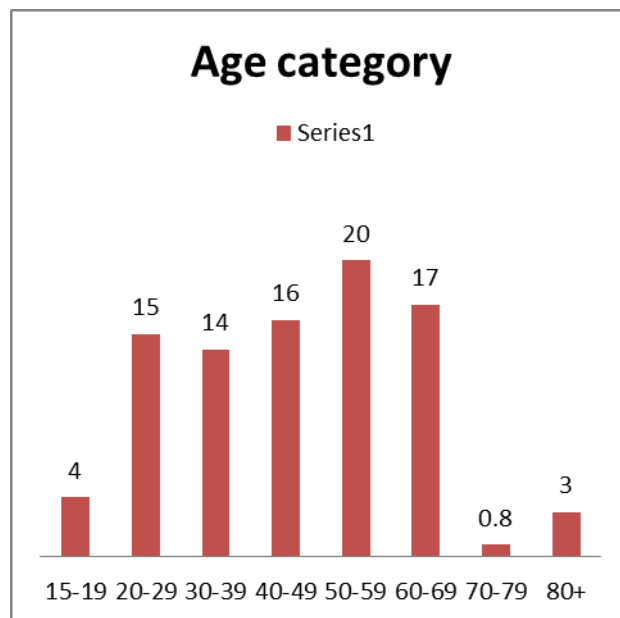
Community	% Respondents
Arcola	17.9
Carlyle	36
Kenosee Lake	13
Kisbey	6
Manor	8
Other: Broadview, Kipling, Storthoaks, Willmar, Cannington Lake, Wawota, Yorkton and White Bear	19



Question 2: Please select your age category

Age category	%
15-19	4

20-29	15
30-39	14
40-49	16
50-59	20
60-69	17
70-79	0.8
80+	3



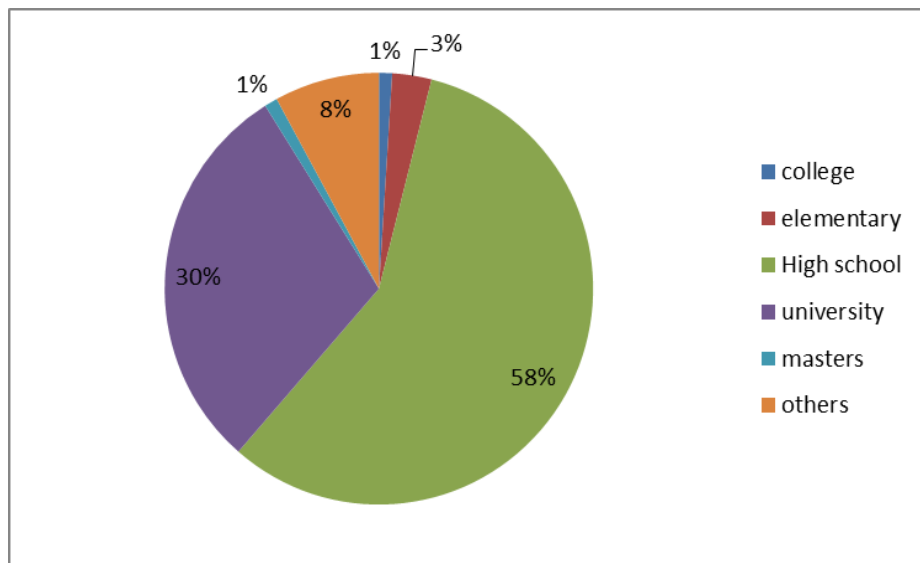
Question 3: Gender

Gender	%
Female	72
Male	28

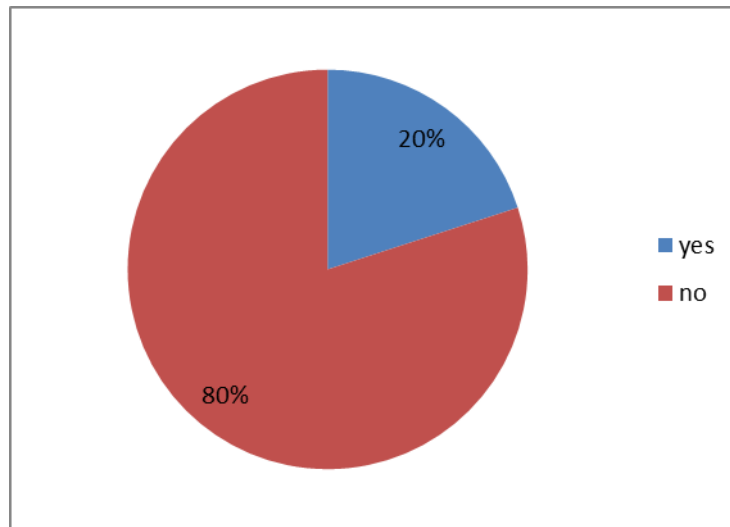
Question 4: what is your highest level of education?

Highest education	%
-------------------	---

College	1
Elementary	3
High school	58
University	30
Master's degree or higher	1
Other: home schooled, Adult education, School of Nursing, University no degree, technical school	



Question 5: Have you recently sought emergency care in the past 6 months?

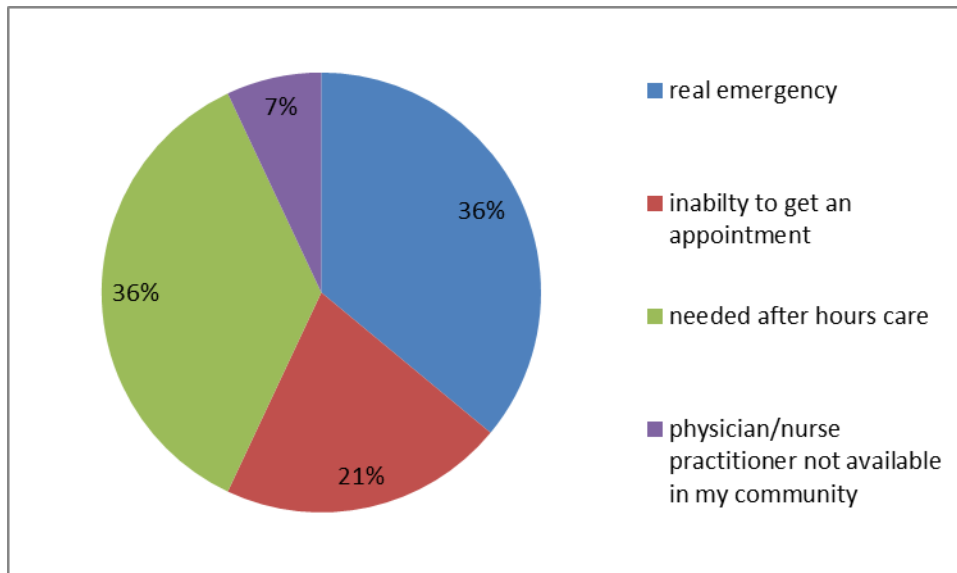


Question 5B: If yes, what did you seek emergency care for?

Reasons include infection, sick child, seizure, broken bone, concussed child, split open chin, flu, food lodge in the throat, asthma, post surgery care, lung infection, light headedness, sprained ankle, bronchitis, migraine and loss of vision

Question 6: Why did you choose to go to the emergency department instead of going to your family physician/nurse practitioner?

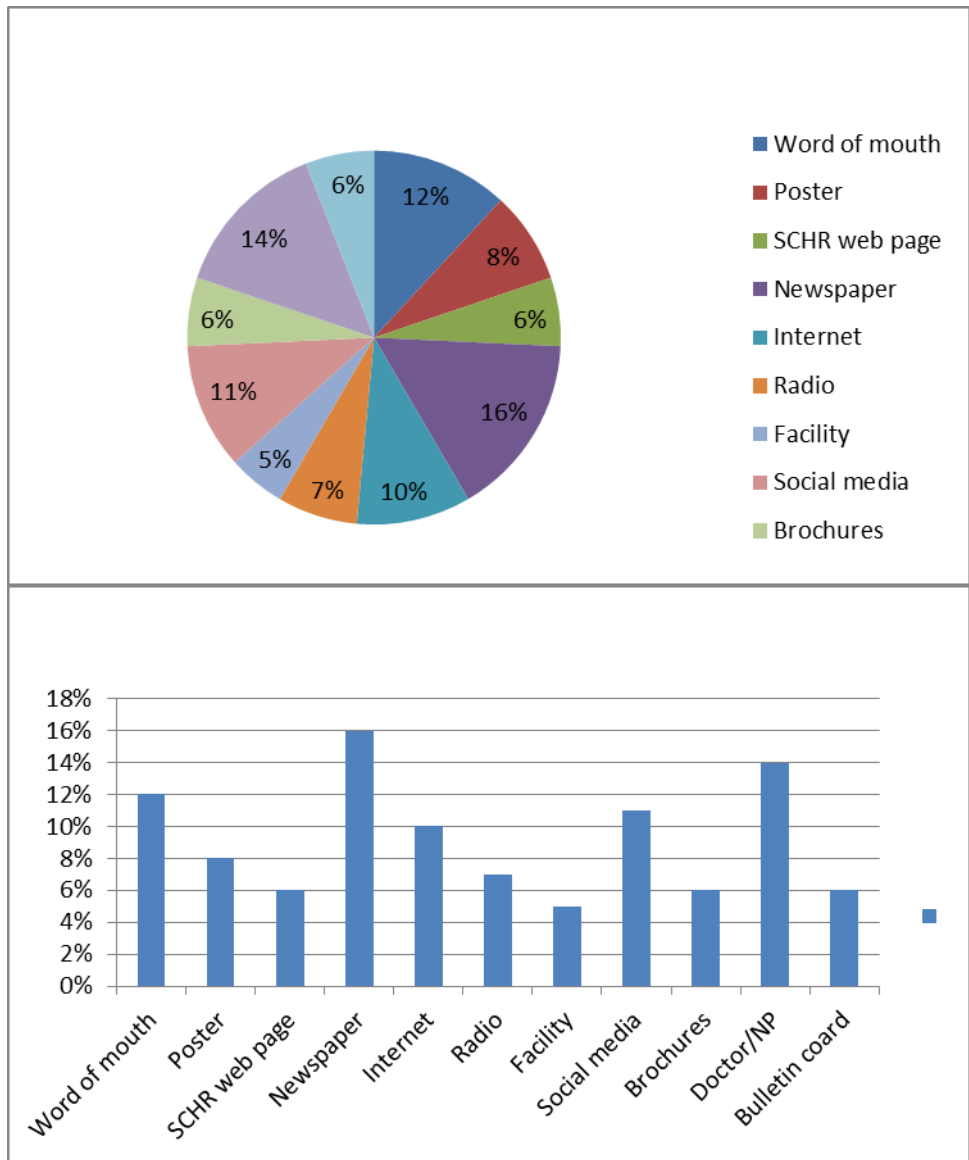
Real emergency	36%
Inability to get an appointment	21%
Needed after hours care	36%
Physician/nurse practitioner not available in my community	7%
other	In Moosomin for a scheduled surgery, couldn't wait for Dr. appointment because of extreme pain



Question 7

How did you prefer to find out about health services and program information in your community?

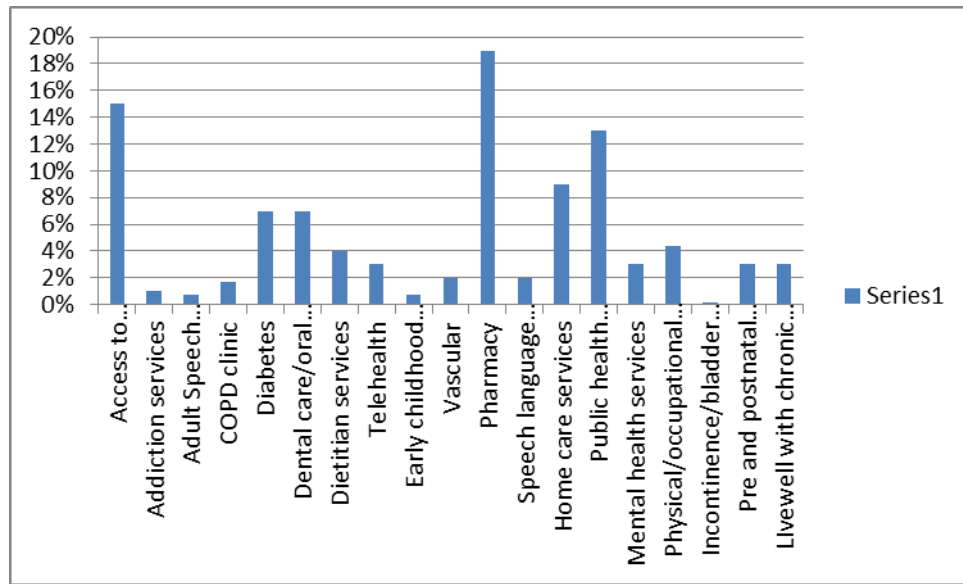
Word of mouth	12%
Poster	8%
SCHR web page	6%
Newspaper	16%
Internet	10%
Radio	7%
Facility	5%
Social media	11%
Brochures	6%
Doctor/NP	14%
Bulletin board	6%



Question 8: In your opinion, what health programs and services are working well in your community? (choose as many as you want)

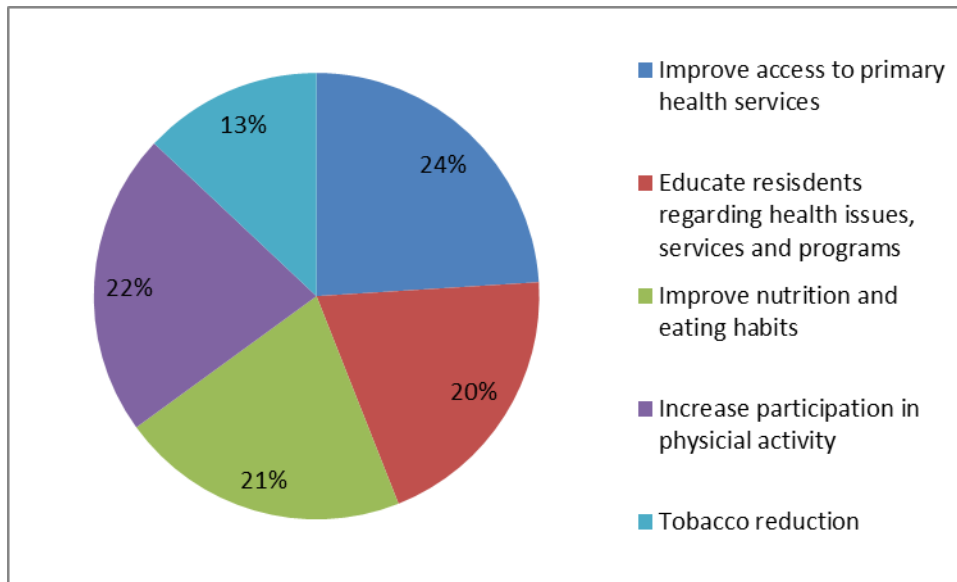
Access to Doctor/Nurse Practitioner	15%
Addiction services	1%
Adult Speech Language Pathology services	0.7%
COPD clinic	1.7%

Diabetes	7%
Dental care/oral health (children's program)	7%
Dietitian services	4%
Telehealth	3%
Early childhood psychology services	0.7%
Vascular	2%
Pharmacy	19%
Speech language pathology services	2%
Home care services	9%
Public health services(immunization {flu/child health} or inspection	13%
Mental health services	3%
Physical/occupational/exercise therapy services	4.4%
Incontinence/bladder health	0.2%
Pre and postnatal public health services	3%
Livewell with chronic conditions	3%
No response	4%
None	
Other	



Question 9: please check the areas you feel are most important in making residents of your community healthier (choose as many as you want)

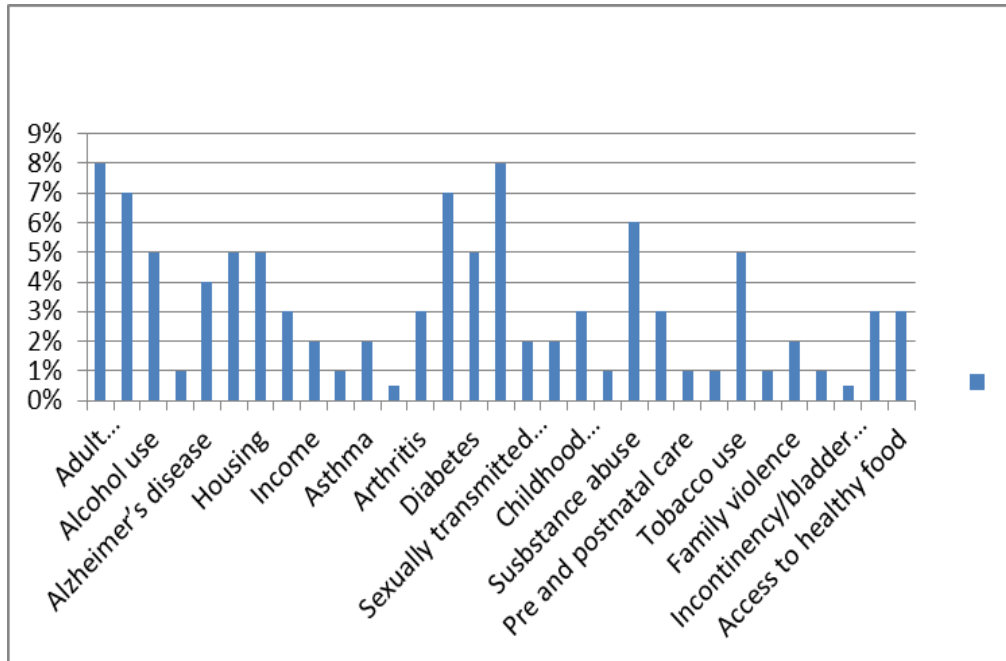
Improve access to primary health services	24%	
Educate residents regarding health issues, services and programs	20%	
Improve nutrition and eating habits	21%	
Increase participation in physical activity	22%	
Tobacco reduction	13%	
other	Substance abuse, more access to mental health, provide more education for family with members in LTC, that is dementia, replace professionals while on maternity leave or any leave, health issues specific to Aboriginal population, alcohol and substance abuse	



Question 10: In your opinion, what are the most important health issues in your community? (pick the top 3)

Adult overweight/obesity	8%
Heart disease and stroke	7%
Alcohol use	5%
HIV/AIDS	1%
Alzheimer's disease	4%
Physical activity	5%
Housing	5%
Child care	3%
Income	2%
Autism	1%
Asthma	2%
COPD	0.5%
Arthritis	3%

Mental health	7%
Diabetes	5%
Cancer	8%
Sexually transmitted infections	2%
Teen pregnancy	2%
Childhood overweight/obesity	3%
Childhood dental care/oral health	1%
Substance abuse	6%
Suicide	3%
Pre and postnatal care	1%
Eating disorders	1%
Tobacco use	5%
Menopause/peri-menopause	1%
Family violence	2%
Men's health	1%
Incontinency/bladder health	0.5%
Pharmacy services	3%
Access to healthy food	3%



Question 11: In your opinion, in terms of “access” how would you rate the following services and programs

a

	Excellent	Good	Fair	Poor	Don't know	Never used	Remarks
Doctor/Nurse Practitioner	22	55	36	13	2	0	
%	19%	48%	31%	11%	2%		

b

	Excellent	Good	Fair	Poor	Don't know	Never used	Remarks
Addiction services	1	11	14	12	27	53	
	1%	9%	12%	10%	23%	45%	

c.

	Excellent	Good	Fair	Poor	Don't know	Never used	Remarks
Adult speech language pathology services	0	5	6	2	36	69	
		4%	5%	2%	31%	58%	

d.

	Excellent	Good	Fair	Poor	Don't know	Never used	Remarks
Incontinency/Bladder health	0	6	8	2	36	70	
		5%	7%	2%	30%	57%	

e.

	Excellent	Good	Fair	Poor	Don't know	Never used	Remarks
Dental care/Oral health (children's services)	10	28	13	7	22	44	
	8%	23%	10%	6%	18%	35%	

f.

	Excellent	Good	Fair	Poor	Don't know	Never used	Remarks
Diabetes clinic	6	26	7	1	29	57	
	5%	21%	6%		23%	45%	

g.

	Excellent	Good	Fair	Poor	Don't know	Never used	Remarks
Dietitian services	4	29	9	3	23	55	
	3%	24%	7%	2%	19%	45%	

h.

	Excellent	Good	Fair	Poor	Don't know	Never used	Remarks
Early childhood psychology services	1	10	11	6	27	63	
		8%	9%	5%	23%	53%	

i.

	Excellent	Good	Fair	Poor	Don't know	Never used	Remarks
Speech/Language pathology services	7	9	11	7	24	61	
	6%	8%	9%	6%	20%	51%	

j.

	Excellent	Good	Fair	Poor	Don't know	Never used	Remarks
Pharmacy services	48	56	6	2	3	10	
	38%	45%	5%	2%	2%	8%	

k.

	Excellent	Good	Fair	Poor	Don't know	Never used	Remarks
Homecare services	7	41	9	6	12	48	
	6%	33%	7%	5%	10%	39%	

l.

	Excellent	Good	Fair	Poor	Don't know	Never used	Remarks
LiveWell with Chronic Conditions	3	17	10	3	28	59	
	3%	14%	8%	3%	23%	49%	

m.

	Excellent	Good	Fair	Poor	Don't know	Never used	Remarks
Mental health services	6	20	13	13	17	49	
	5%	17%	11%	11%	14%	42%	

n.

	Excellent	Good	Fair	Poor	Don't know	Never used	Remarks
Public health services (flu, child health, or inspection)	16	60	12	1	8	26	
	13%	49%	10%		7%	21%	

o.

	Excellent	Good	Fair	Poor	Don't know	Never used	Remarks

Physical/ occupational/ exercise therapy services	7	27	15	6	22	41	
	6%	23%	13%	5%	19%	35%	

p.

	Excellent	Good	Fair	Poor	Don't know	Never used	Remarks
Pre and postnatal public health services	4	19	8	2	26	59	
	3%	16%	7%	2%	22%	50%	

q.

	Excellent	Good	Fair	Poor	Don't know	Never used	Remarks
Telehealth	2	12	9	1	25	68	
	2%	10%	8%	1%	21%	58%	

r.

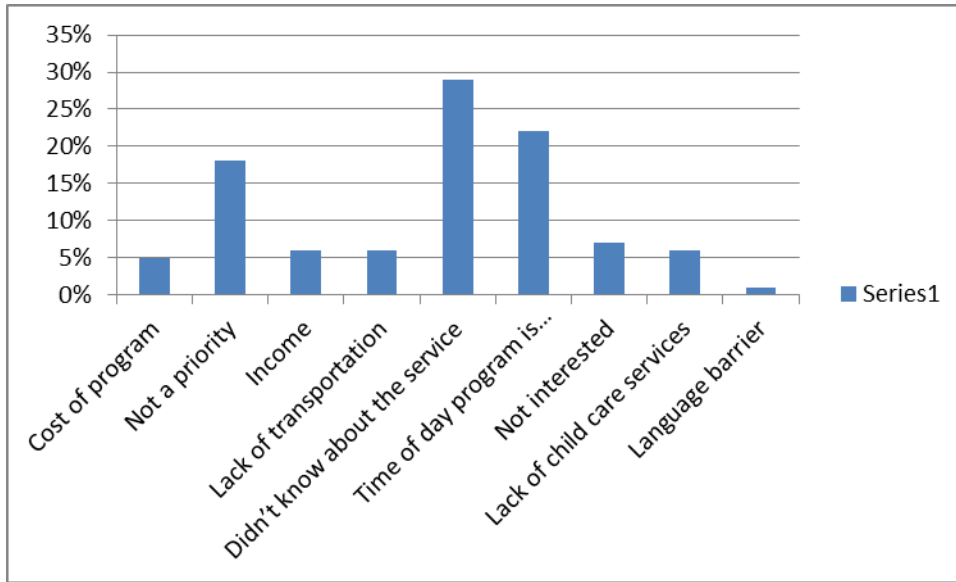
	Excellent	Good	Fair	Poor	Don't know	Never used	Remarks
Vascular	0	8	4	1	30	73	
		7%	3%	1%	26%	63%	

Question 12: Would it be beneficial to have all the above specialty programs/services in one facility?

Yes	75%
No	25%

Question 13: What barriers keep you from accessing health services in your community?

Cost of program	5%	
Not a priority	18%	
Income	6%	
Lack of transportation	6%	
Didn't know about the service	29%	
Time of day program is offered	22%	
Not interested	7%	
Lack of child care services	6%	
Language barrier	1%	
other	Dr not taking new patients, lack of informed doctors, limited availability of services, long wait list, no barriers, lack of reliable resident doctor, usually can't find time	



Question 14: Are you aware of the Primary Health Team in the area?

Yes	45%
No	45%
Somewhat	1%

Question 15: In your opinion, how would you suggest we improve the health and well-being of the people in your community

- Encourage physicians to work together and practice in a manner that encourages patient and family “well-being”. Have the nurse practitioner out and about providing public education on health issues
- Having Arcola Hospital staff to be more approachable with patients would help
- Let people know about programs being offered
- Having more doctors
- Promote healthy living exercise and diet
- Improve walkability/promotion of physical activity, increase visibility at community, industrial events
- More online access to information
- Keeping pamphlets about all programs and services on hand would be good
- Reopen community rural hospitals, uncentralize from Regina as reduction of cost is not a good reason to move services from our community
- Improve services for mental area- schizophrenia
- Less wait time to see physicians and nurse practitioners
- Keep recruiting doctors, also get ACP’s in Carlyle
- More resources for speech therapy, physical therapy e tc.
- Need doctors that know about chronic health conditions. Need long term Drs so that a person doesn’t need to be tested for life –long conditions every time a doctor changes
- Reliable emergency services
- Establish community and health support meetings and group based illness e.g cancer, arthritis
- We need more beds in long term beds. Making sure our 24hrs facility remain open in rural communities
- Bring services to the reserves
- Show us you care, most don’t
- More education in school on healthy life styles
- Flexible hours for appointment times for getting blood workdone

- Advertise the services you offer, have presentations in workplaces, schools, brochures for information and discounted gym memberships
- Education for families with members in LTC e.g dementia, educate community about services, decrease wait times for mental health services
- Health care tips in local newspapers
- Focus more on children
- More access to mental health