

Primary Health Care Plan: Phase One (Practitioners)

Board Approved
February 23, 2011

GUIDING PRINCIPLES

Affirmed by Board.

Guiding Principles

- The Plan must be sustainable over time and must have stability.
- The Plan must ensure equitable patient access to primary care.
- The Plan must ensure that practitioners working in southeast Saskatchewan feel they have an appropriate quality of life, with manageable patient workload and remuneration reflecting their contribution to the health care system.
- The Plan must achieve a full scope of practice.

Guiding Principles

- The Plan must address the health status of the population in the catchment area, taking into consideration socio-economic factors, employment opportunities, education, and demographic factors.
- The Plan will embrace a range of primary care providers, including physicians, nurses, midwives and others. These resources will be based upon population need and critical mass.
- The Plan must ensure continuity in the delivery of health care.
- The structure and operations of the Plan will be evidence-based.
- The Plan must reflect best practice principles.

Guiding Principles

- The Plan will ensure that there will be no single physician self-contained practices and that all practices will be collaborative.
- Implementation of the Plan will be a collaborate effort involving community representation, family practice physicians, other health care professionals, and the Regional Health Authorities.
- The Plan must reflect any applicable legislative requirements.
- The Plan must reflect the applicable expectations of the College of Physicians & Surgeons of Saskatchewan.
- The Plan must reflect the ideal model of practitioner coverage but also must consider existing facility placement.

PLANNING FILTERS

Affirmed by Board.

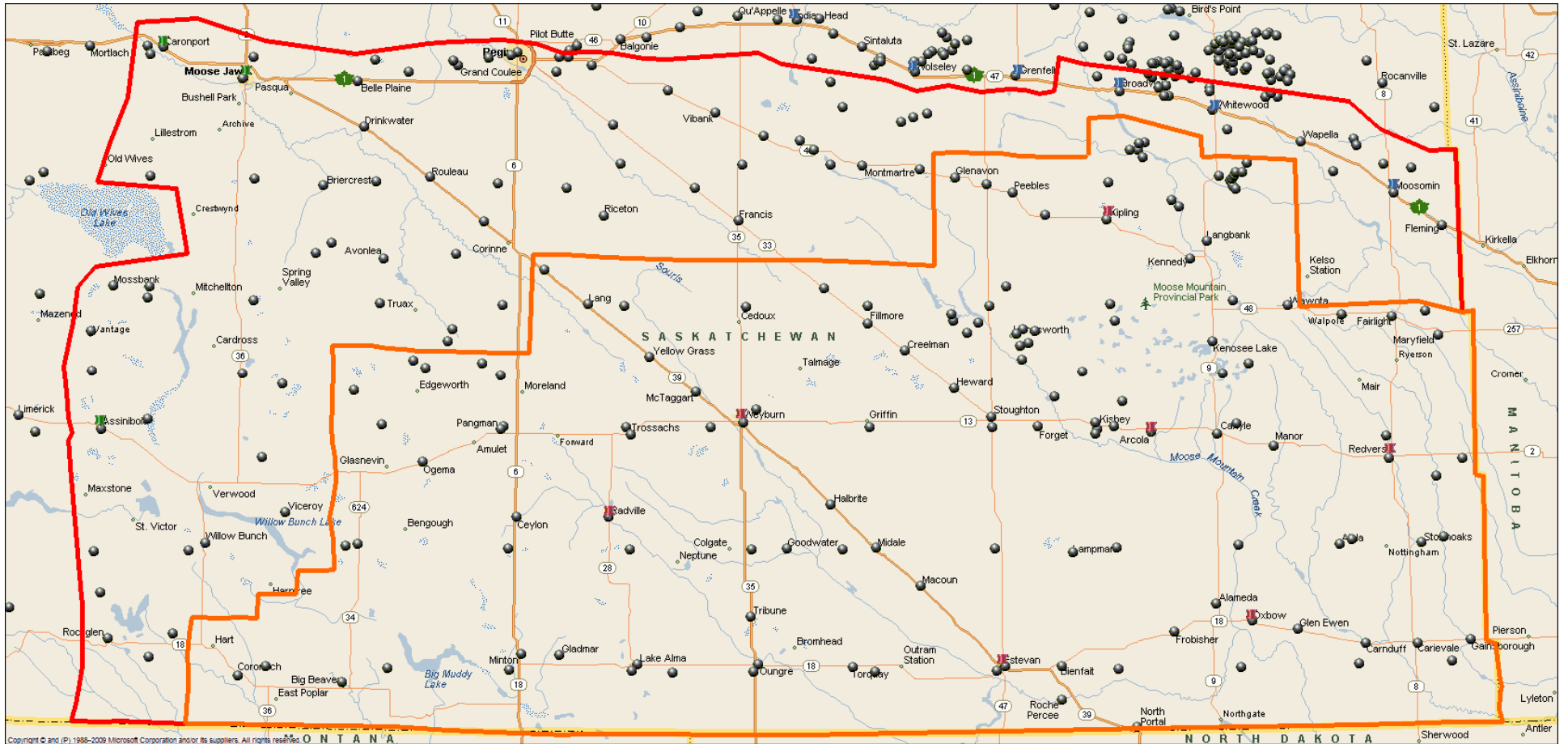
Planning Filters

- Travel time by a practitioner to a patient shall not exceed the provincial guideline of a maximum of 45 minutes and ideally, shall not exceed 30 minutes.
- Travel time by a patient to a practitioner shall not exceed 45 minutes to a hub and 30 minutes to a spoke.
- The mix of hub and spokes, based on the noted travel times, will cover in excess of 95% of the population.
- The on-call schedule will ideally be 1:5, and no community will have less than three primary care practitioners.
- The smallest group practice will be three primary care practitioners per 3,000 population.
- Current retail shopping patterns will be reflected in the model.

APPROVED OPTIONS

Overview Map

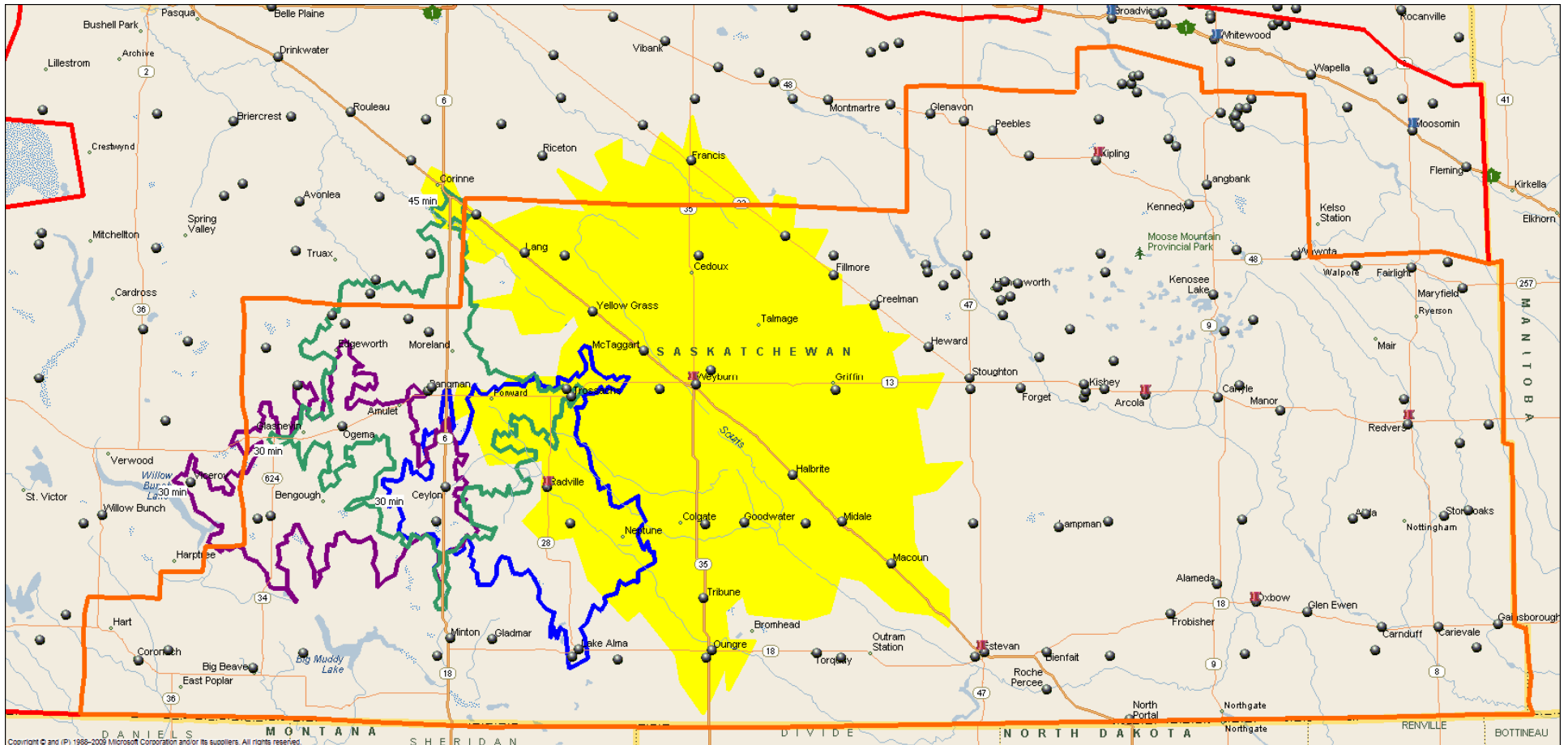
(Includes South Eastern Saskatchewan and SCHR Boundaries)



DRAFT Results – Confidential – NOT FOR DISTRIBUTION

APPROVED CENTRAL OPTION

Approved Central: Weyburn-Radville



	Location	Colour
Hub	Weyburn	Yellow
Spoke	Radville	Blue
Sub-Spoke	Bengough/Pangman	Purple/Green

Notes:
 Hub cities include a 45 min. Drive. All other drives are 30 minutes.

Confidential
 - NOT FOR DISTRIBUTION -
 February 23, 2011

Approved Central: Weyburn-Radville

- Estimated and Projected Population and Physicians -

Name	Hub-Spoke	Estimated and Projected Population					Estimated and Projected Family Practitioners				
		FY 2008	FY 2014	FY 2019	FY 2024	FY 2029	FY 2008	FY 2014	FY 2019	FY 2024	FY 2029
Central	Bengough30	1,245	1,185	1,139	1,095	1,047	1	1	1	1	1
Central	Pangman30	693	668	637	604	570	1	1	1	1	1
Central	Radville30	1,654	1,579	1,516	1,449	1,375	1	1	1	1	1
Central	Weyburn45	13,727	13,866	13,986	14,082	14,091	12	12	13	13	13
Central	Total	17,319	17,298	17,278	17,229	17,084	15	15	16	16	16

	Location	Colour
Hub	Weyburn	Yellow
Spoke	Radville	Blue
Sub-Spoke	Bengough/Pangman	Purple/Green

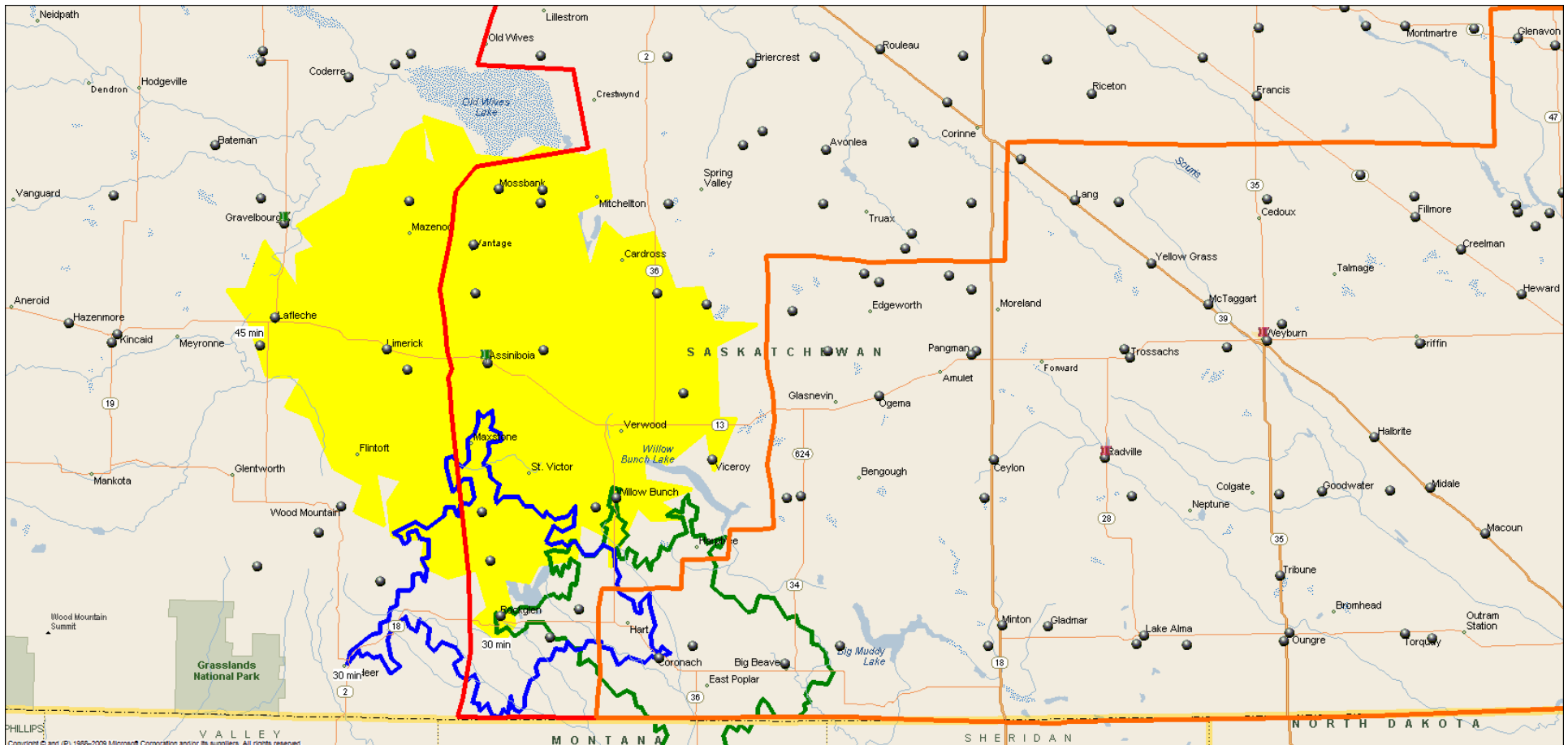
Notes:

Hub cities include a 45 min. Drive. All other drives are 30 minutes.

Confidential
- NOT FOR DISTRIBUTION -
February 23, 2011

APPROVED SOUTHWEST OPTION

Approved Southwest: Assiniboia-Coronach



	Location	Colour
Hub	Assiniboia	Yellow
Spoke	Rockglen - Coronach	Blue- Green
Sub-Spoke		

Notes:
 Hub cities include a 45 min. Drive. All other drives are 30 minutes.

Confidential
 - NOT FOR DISTRIBUTION -
 February 23, 2011

Approved Southwest: Assiniboia-Coronach

- Estimated and Projected Population and Physicians -

Name	Hub-Spoke	Estimated and Projected Population					Estimated and Projected Family Practitioners				
		FY 2008	FY 2014	FY 2019	FY 2024	FY 2029	FY 2008	FY 2014	FY 2019	FY 2024	FY 2029
Southwest	Assiniboia45	5,905	5,427	5,057	4,704	4,333	4	4	4	4	4
Southwest	Coronach30	1,369	1,275	1,206	1,145	1,081	1	1	1	1	1
Southwest	Rockglen30	721	663	627	602	572	1	1	1	1	0
Southwest	Total	7,995	7,364	6,890	6,451	5,986	6	6	5	5	5

	Location	Colour
Hub	Assiniboia	Yellow
Spoke	Rockglen - Coronach	Blue- Green
Sub-Spoke		

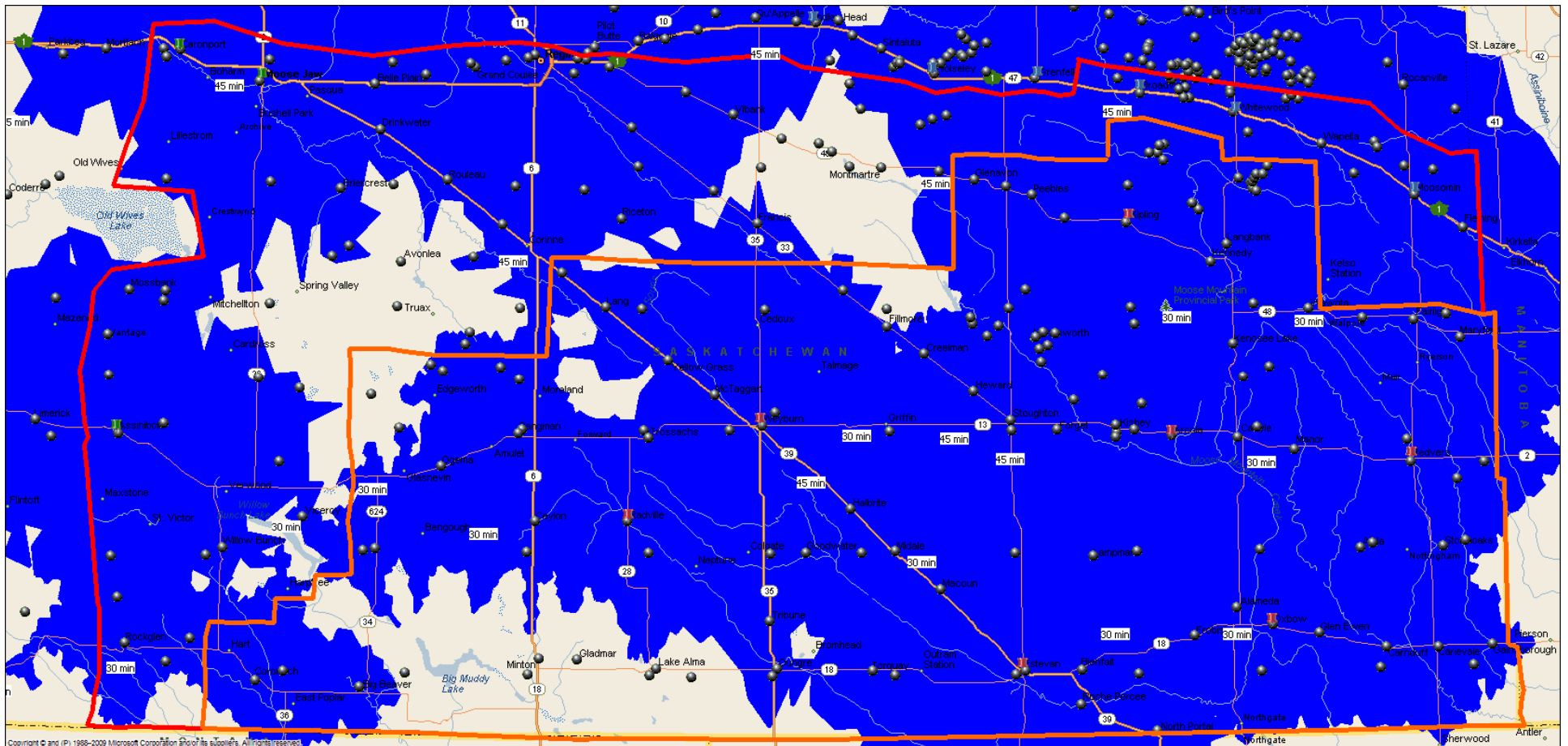
Notes:

Hub cities include a 45 min. Drive. All other drives are 30 minutes.

Confidential
- NOT FOR DISTRIBUTION -
February 23, 2011

SUMMARY OF APPROVED OPTIONS

Composite of Approved Options



2008 (est.)	Unresolved Population	Unresolved Physicians
SCHR	1,057	1
SE Sask (other)	3,335	3
Total	4,392	4

Confidential
- NOT FOR DISTRIBUTION -
February 23, 2011

Composite of Approved Options

- Estimated and Projected Population and Physicians -

Location	Estimated and Projected Population					Estimated and Projected Family Practitioners				
	FY 2008	FY 2014	FY 2019	FY 2024	FY 2029	FY 2008	FY 2014	FY 2019	FY 2024	FY 2029
Southwest	7,995	7,364	6,890	6,451	5,986	6	6	5	5	5
Northwest	257,600	261,523	263,968	265,121	264,862	178	184	189	192	195
North	8,542	8,671	8,794	8,930	9,037	6	6	6	6	6
Northeast	11,865	11,397	10,964	10,500	9,969	11	10	10	10	9
Southeast	21,629	21,428	21,202	20,916	20,528	17	17	17	17	17
Central East	9,434	9,241	9,080	8,888	8,632	7	7	7	6	6
Central	17,319	17,298	17,278	17,229	17,084	15	15	16	16	16

Confidential
 - NOT FOR DISTRIBUTION -
 February 23, 2011

Next Steps

ITEM	STEPS	TIMEFRAME
1.	Board Approval – PHCP: Phase I (Practitioners)	Feb. Board Mtg.
2.	Update: <ul style="list-style-type: none">•Ministry of Health•RHAs (FHHR and RQHR)•Physician Recruitment Board•CPSS, SMA and others	February to March
3.	Engage the following groups in order to develop an Implementation Plan: <ul style="list-style-type: none">•RHAs (i.e., FHHR and RQHR)•Physicians•Communities	March to September
4.	Roll out Implementation plan through attrition and evolution	March and on-wards
5.	On-going monitoring and validation of the plan.	On-going

Measures

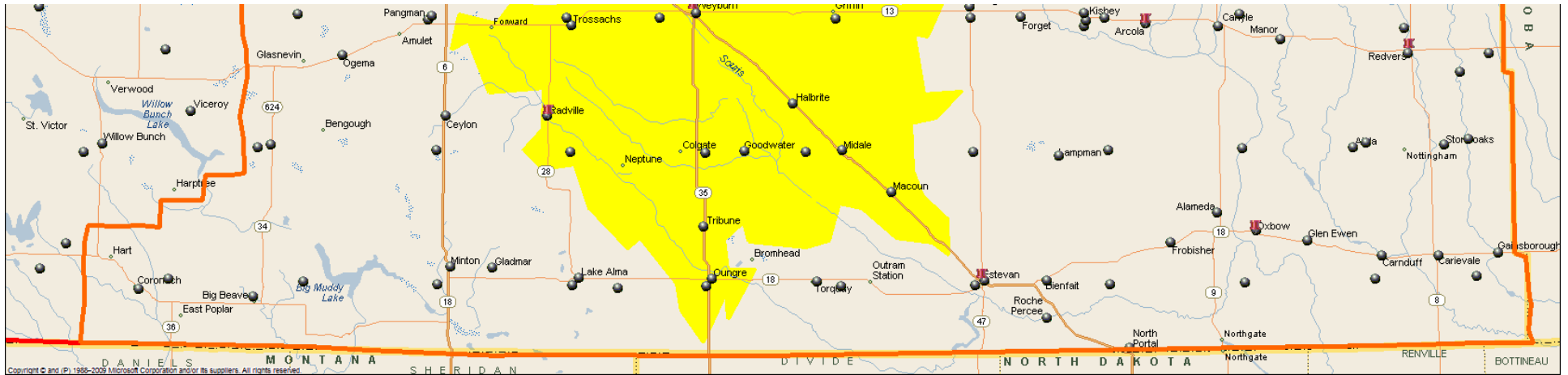
- **Sustainability:**
 - % annual physician turnover
- **Access:**
 - % Patients reporting a personal Family Physician
 - # Days to 3rd next available appointment
 - % avoidable Emergency Room visits
- **Quality of Life:**
 - Physician Satisfaction Survey
- **Health Status:**
 - Multiple measures available

- END -

ALTERNATIVE OPTIONS

CENTRAL OPTIONS

Central A: Weyburn



	Location	Colour
Hub	Weyburn	Yellow
Spoke		
Sub-Spoke		

Notes:
 Hub cities include a 45 min. Drive. All other drives are 30 minutes.

**DRAFT Results – Confidential
 - NOT FOR DISTRIBUTION -
 February 16, 2011**

Central A: Weyburn

- Estimated and Projected Population and Physicians -

Name	Hub-Spoke	Estimated and Projected Population					Estimated and Projected Family Practitioners				
		FY 2008	FY 2014	FY 2019	FY 2024	FY 2029	FY 2008	FY 2014	FY 2019	FY 2024	FY 2029
Central	Weyburn45	14,292	14,400	14,501	14,577	14,563	13	13	13	13	14
Central	Total	14,292	14,400	14,501	14,577	14,563	13	13	13	13	14

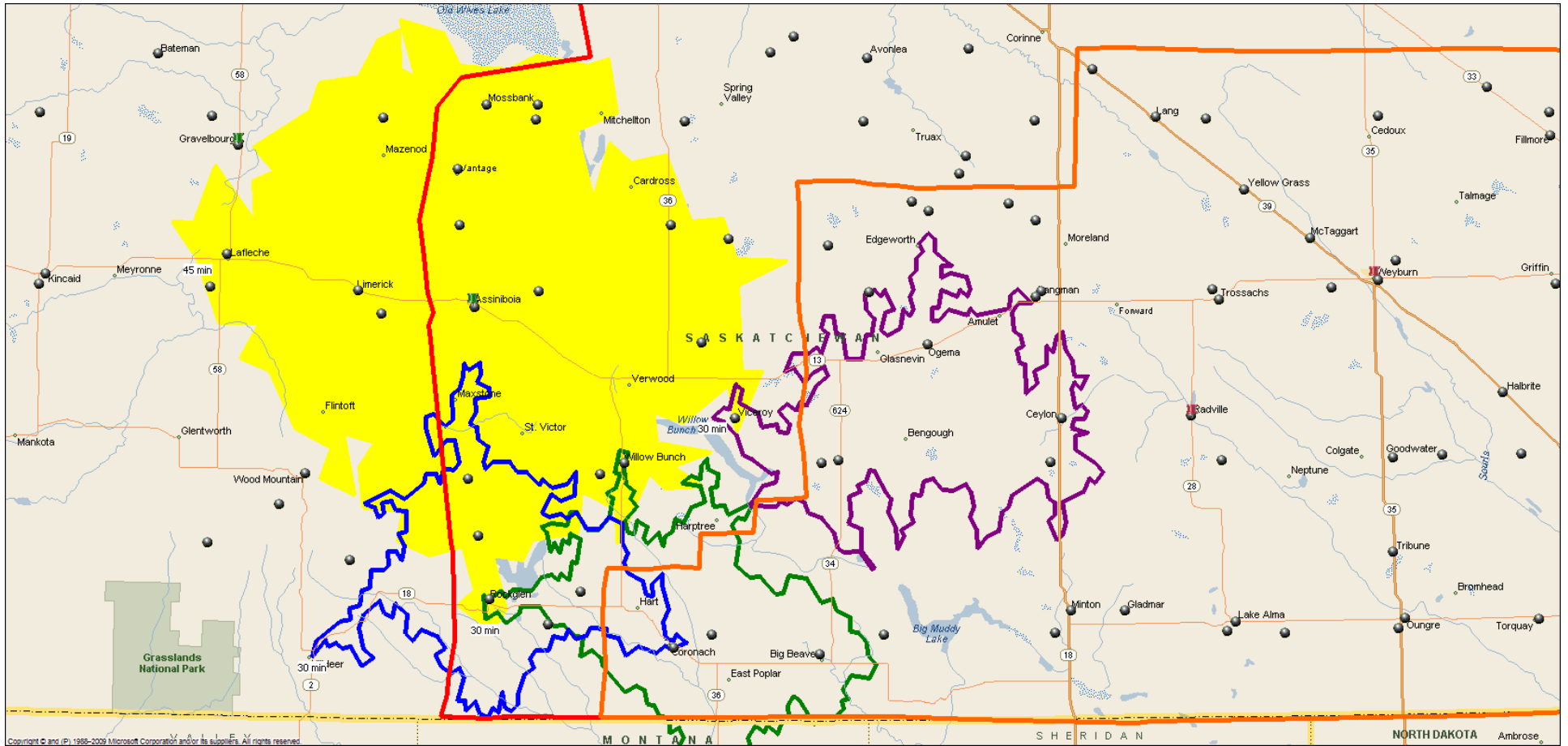
	Location	Colour
Hub	Weyburn	Yellow
Spoke		
Sub-Spoke		

Notes:
 Hub cities include a 45 min. Drive. All other drives are 30 minutes.

DRAFT Results – Confidential
 - NOT FOR DISTRIBUTION -
 February 16, 2011

SOUTHWEST OPTIONS

Southwest A: Assiniboia-Coronach-Bengough



	Location	Colour
Hub	Assiniboia	Yellow
Spoke	Rockglen/Coronach/Bengough	Blue/Green/Purple
Sub-Spoke		

Notes:
 Hub cities include a 45 min. Drive. All other drives are 30 minutes.

**DRAFT Results – Confidential
 - NOT FOR DISTRIBUTION -
 February 16, 2011**

Southwest A: Assiniboia-Coronach-Bengough

- Estimated and Projected Population and Physicians -

Name	Hub-Spoke	Estimated and Projected Population					Estimated and Projected Family Practitioners				
		FY 2008	FY 2014	FY 2019	FY 2024	FY 2029	FY 2008	FY 2014	FY 2019	FY 2024	FY 2029
Southwest	Assiniboia45	5,905	5,427	5,057	4,704	4,333	4	4	4	4	4
Southwest	Bengough30	1,358	1,295	1,244	1,195	1,143	1	1	1	1	1
Southwest	Coronach30	1,369	1,275	1,206	1,145	1,081	1	1	1	1	1
Southwest	Rockglen30	721	663	627	602	572	1	1	1	1	0
Southwest	Total	9,353	8,659	8,134	7,646	7,128	7	7	7	6	6

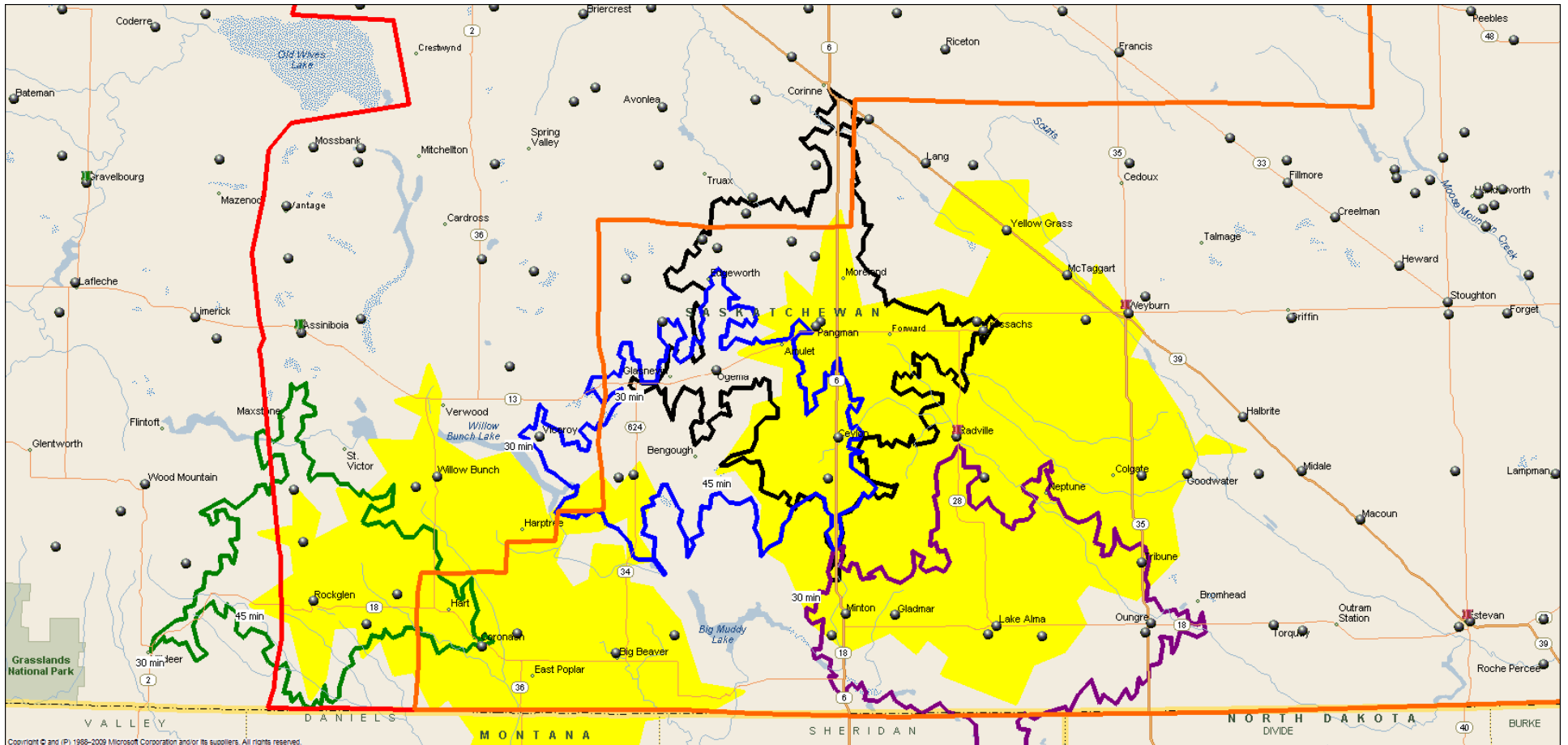
	Location	Colour
Hub	Assininboia	Yellow
Spoke	Rockglen/Coronach/Bengough	Blue/Green/Purple
Sub-Spoke		

Notes:

Hub cities include a 45 min. Drive. All other drives are 30 minutes.

**DRAFT Results – Confidential
- NOT FOR DISTRIBUTION -
February 16, 2011**

Southwest B: Rural West



	Location	Colour
Hub	Radville/Coronach	Yellow
Spoke	Lake Alma/Pangman/ Bengough/Rockglen	Purple/Black/Blue/Green

Notes:
Hub cities include a 45 min. Drive. All other drives are 30 minutes.

**DRAFT Results – Confidential
- NOT FOR DISTRIBUTION -
February 16, 2011**

Southwest B: Rural West

- Estimated and Projected Population and Physicians -

Name	Hub-Spoke	Estimated and Projected Population					Estimated and Projected Family Practitioners				
		FY 2008	FY 2014	FY 2019	FY 2024	FY 2029	FY 2008	FY 2014	FY 2019	FY 2024	FY 2029
Southwest	Bengough30	1,245	1,185	1,139	1,095	1,047	1	1	1	1	1
Southwest	Coronach45	1,565	1,462	1,389	1,322	1,246	1	1	1	1	1
Southwest	Lake Alma30	748	719	685	650	615	1	1	1	1	0
Southwest	Pangman30	774	746	713	675	636	1	1	1	1	1
Southwest	Radville45	2,422	2,319	2,222	2,118	2,007	2	2	2	2	2
Southwest	Rockglen30	721	663	627	602	572	1	1	1	1	0
Southwest	Total	7,475	7,093	6,776	6,462	6,124	6	6	6	5	5

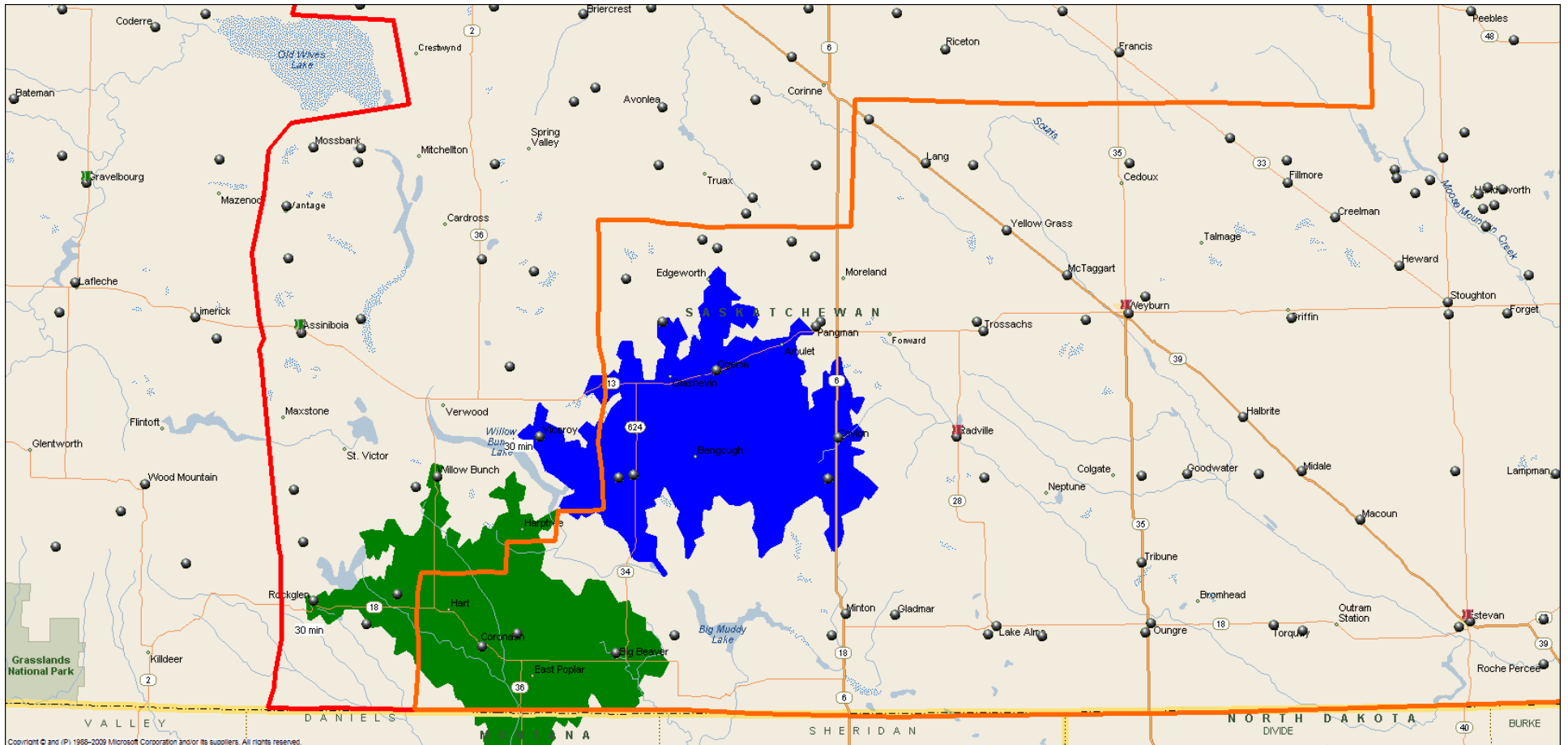
	Location	Colour
Hub	Radville/Coronach	Yellow
Spoke	Lake Alma/Pangman/ Bengough/Rockglen	Purple/Black/Blue/Green

Notes:

Hub cities include a 45 min. Drive. All other drives are 30 minutes.

**DRAFT Results – Confidential
- NOT FOR DISTRIBUTION -
February 16, 2011**

Southwest C: Coronach-Bengough



	Location	Colour
Hub	Coronach/Bengough	Green/Blue
Spoke		
Sub-Spoke		

Notes:
Hub cities include a 30 min. drive .

**DRAFT Results – Confidential
- NOT FOR DISTRIBUTION -
February 16, 2011**

Southwest C: Coronach-Bengough

- Estimated and Projected Population and Physicians -

Name	Hub-Spoke	Estimated and Projected Population					Estimated and Projected Family Practitioners				
		FY 2008	FY 2014	FY 2019	FY 2024	FY 2029	FY 2008	FY 2014	FY 2019	FY 2024	FY 2029
Southwest	Bengough30	1,720	1,647	1,582	1,513	1,440	2	1	1	1	1
Southwest	Coronach30	1,788	1,658	1,570	1,496	1,415	1	1	1	1	1
Southwest	Total	3,508	3,306	3,151	3,008	2,855	3	3	3	3	2

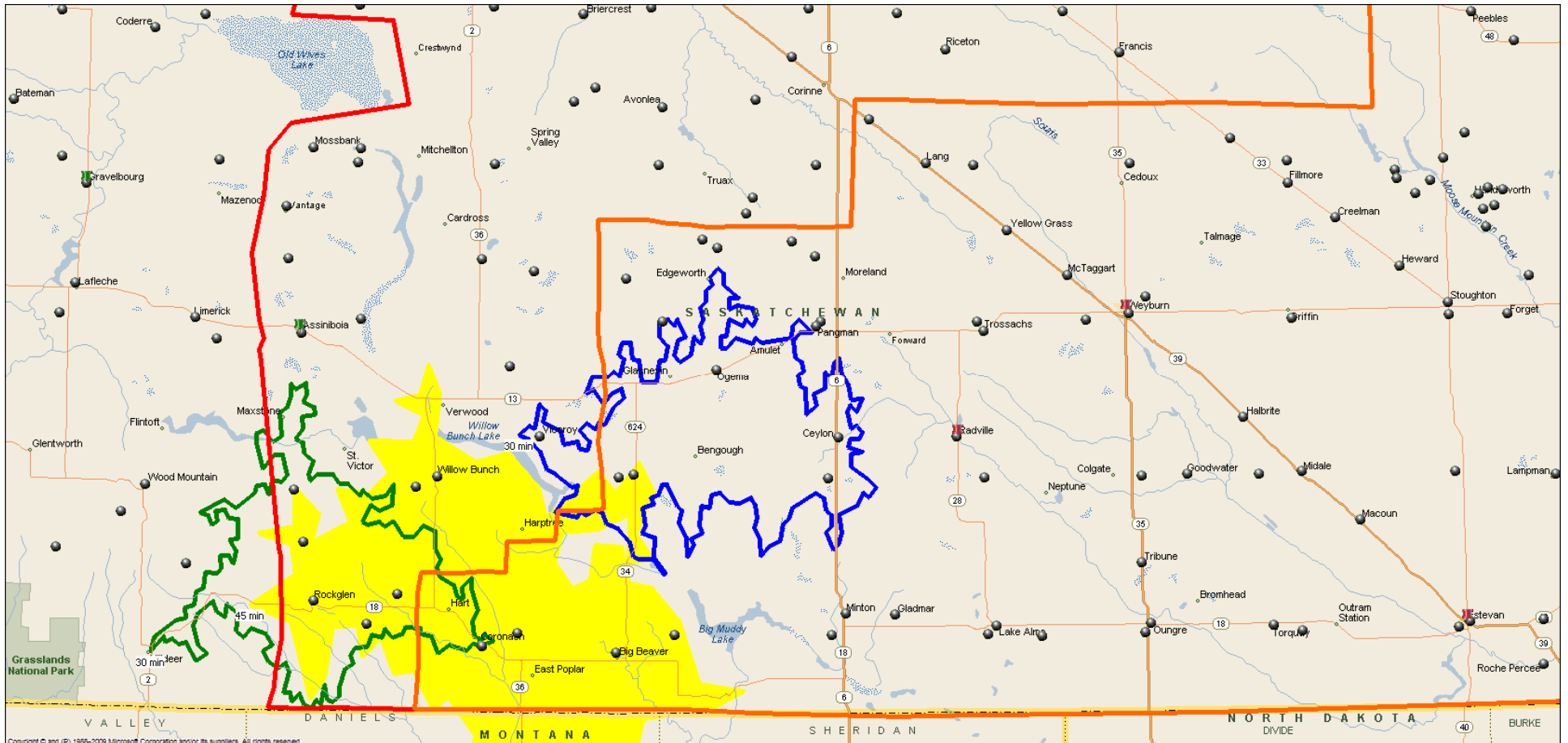
	Location	Colour
Hub	Coronach/Bengough	Green/Blue
Spoke		
Sub-Spoke		

Notes:

Hub cities include a 30 min. drive .

DRAFT Results – Confidential
 - NOT FOR DISTRIBUTION -
 February 16, 2011

Southwest D: Coronach



	Location	Colour
Hub	Coronach	Yellow
Spoke	Bengough/Rock Glen	Blue/Green
Sub-Spoke		

Notes:
 Hub cities include a 45 min. Drive. All other drives are 30 minutes.

**DRAFT Results – Confidential
 - NOT FOR DISTRIBUTION -
 February 16, 2011**

Southwest D: Coronach

- Estimated and Projected Population and Physicians -

Name	Hub-Spoke	Estimated and Projected Population					Estimated and Projected Family Practitioners				
		FY 2008	FY 2014	FY 2019	FY 2024	FY 2029	FY 2008	FY 2014	FY 2019	FY 2024	FY 2029
Southwest	Bengough30	1,720	1,647	1,582	1,513	1,440	2	1	1	1	1
Southwest	Coronach45	1,565	1,462	1,389	1,322	1,246	1	1	1	1	1
Southwest	Rockglen30	721	663	627	602	572	1	1	1	1	0
Southwest	Total	4,006	3,772	3,598	3,437	3,258	3	3	3	3	3

	Location	Colour
Hub	Coronach	Yellow
Spoke	Bengough/Rock Glen	Blue/Green
Sub-Spoke		

Notes:

Hub cities include a 45 min. Drive. All other drives are 30 minutes.

DRAFT Results – Confidential
 - NOT FOR DISTRIBUTION -
 February 16, 2011