

# **Primary Health Care Plan: Phase One (Practitioners)**

Board Approved  
February 23, 2011

# **GUIDING PRINCIPLES**

Affirmed by Board.

# Guiding Principles

- The Plan must be sustainable over time and must have stability.
- The Plan must ensure equitable patient access to primary care.
- The Plan must ensure that practitioners working in southeast Saskatchewan feel they have an appropriate quality of life, with manageable patient workload and remuneration reflecting their contribution to the health care system.
- The Plan must achieve a full scope of practice.

# Guiding Principles

- The Plan must address the health status of the population in the catchment area, taking into consideration socio-economic factors, employment opportunities, education, and demographic factors.
- The Plan will embrace a range of primary care providers, including physicians, nurses, midwives and others. These resources will be based upon population need and critical mass.
- The Plan must ensure continuity in the delivery of health care.
- The structure and operations of the Plan will be evidence-based.
- The Plan must reflect best practice principles.

# Guiding Principles

- The Plan will ensure that there will be no single physician self-contained practices and that all practices will be collaborative.
- Implementation of the Plan will be a collaborate effort involving community representation, family practice physicians, other health care professionals, and the Regional Health Authorities.
- The Plan must reflect any applicable legislative requirements.
- The Plan must reflect the applicable expectations of the College of Physicians & Surgeons of Saskatchewan.
- The Plan must reflect the ideal model of practitioner coverage but also must consider existing facility placement.

# **PLANNING FILTERS**

Affirmed by Board.

# Planning Filters

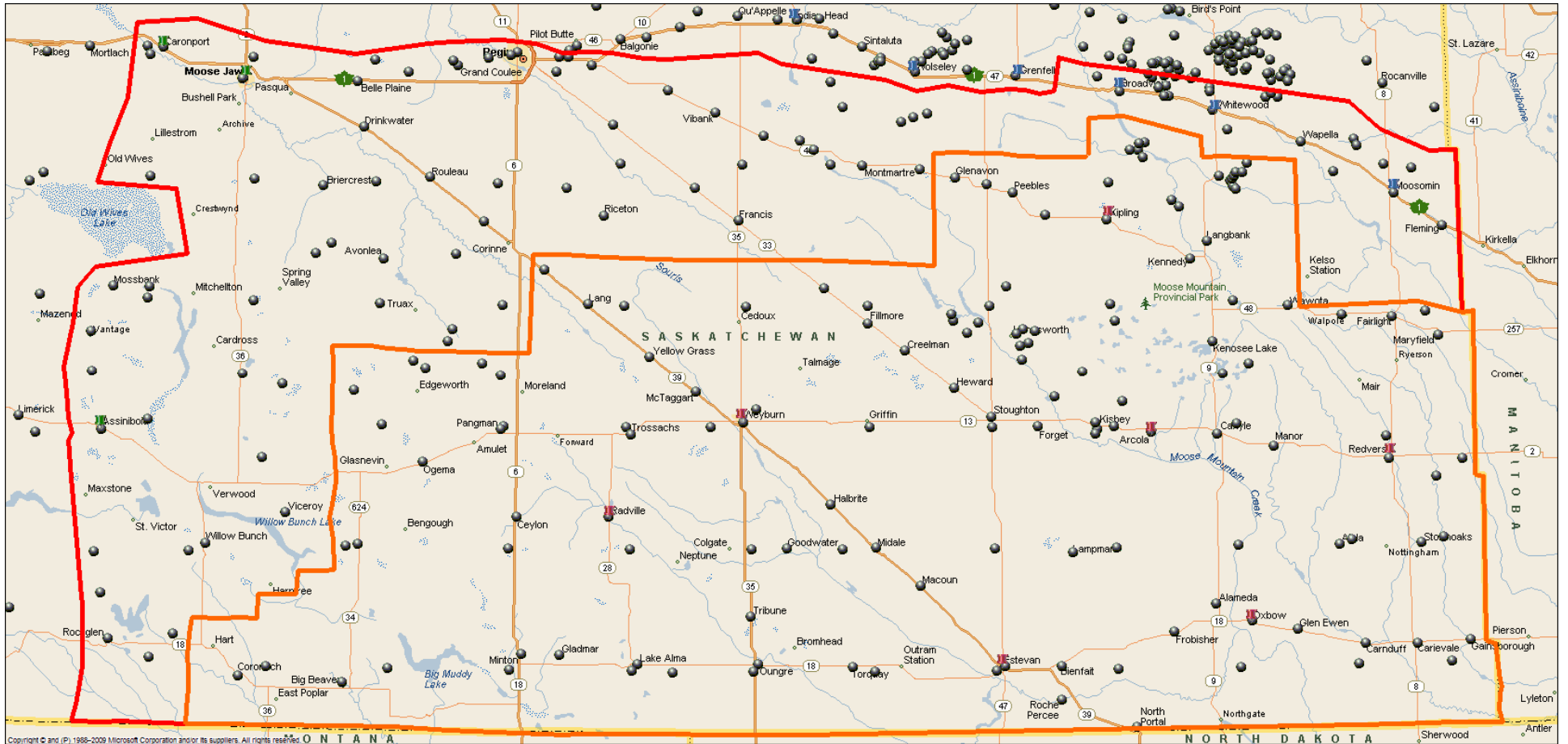
- Travel time by a practitioner to a patient shall not exceed the provincial guideline of a maximum of 45 minutes and ideally, shall not exceed 30 minutes.
- Travel time by a patient to a practitioner shall not exceed 45 minutes to a hub and 30 minutes to a spoke.
- The mix of hub and spokes, based on the noted travel times, will cover in excess of 95% of the population.
- The on-call schedule will ideally be 1:5, and no community will have less than three primary care practitioners.
- The smallest group practice will be three primary care practitioners per 3,000 population.
- Current retail shopping patterns will be reflected in the model.

**APPROVED OPTIONS**



# Overview Map

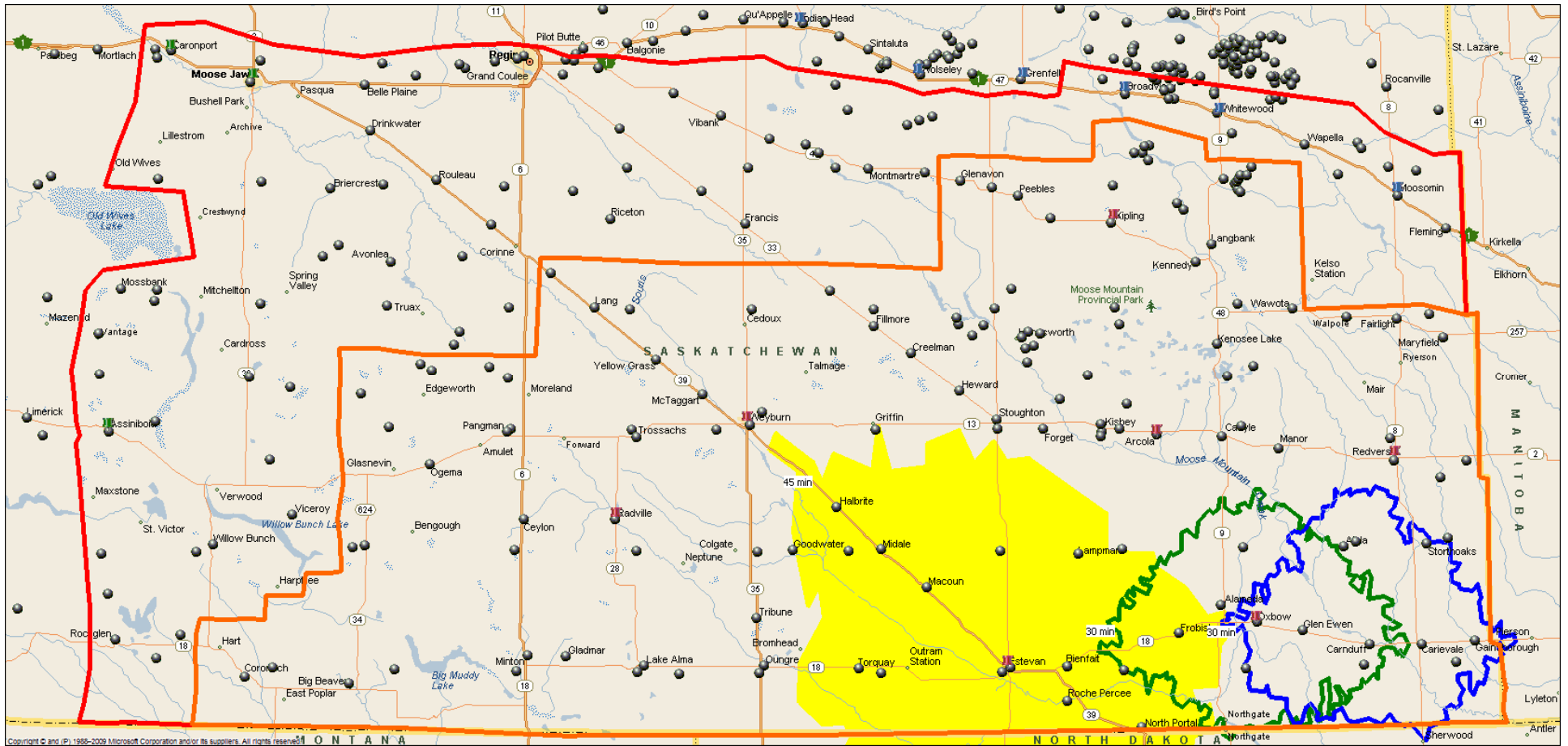
(Includes South Eastern Saskatchewan and SCHR Boundaries)



DRAFT Results – Confidential – NOT FOR DISTRIBUTION

**APPROVED SOUTHEAST OPTION**

# Approved Southeast: Estevan-Oxbow



|           | Location | Colour |
|-----------|----------|--------|
| Hub       | Estevan  | Yellow |
| Spoke     | Oxbow    | Green  |
| Sub-Spoke | Carnduff | Blue   |

**Notes:**  
 Hub cities include a 45 min. Drive. All other drives are 30 minutes.

**Confidential**  
 - NOT FOR DISTRIBUTION -  
 February 23, 2011

# Approved Southeast: Estevan-Oxbow

- Estimated and Projected Population and Physicians -

| Name      | Hub-Spoke    | Estimated and Projected Population |               |               |               |               | Estimated and Projected Family Practitioners |           |           |           |           |
|-----------|--------------|------------------------------------|---------------|---------------|---------------|---------------|--|-----------|-----------|-----------|-----------|
|           |              | FY 2008                            | FY 2014       | FY 2019       | FY 2024       | FY 2029       | FY 2008                                      | FY 2014   | FY 2019   | FY 2024   | FY 2029   |
| Southeast | Carnduff30   | 2,386                              | 2,288         | 2,191         | 2,083         | 1,969         | 2  | 2         | 2         | 2         | 2         |
| Southeast | Estevan45    | 15,879                             | 15,924        | 15,930        | 15,896        | 15,782        | 13   | 13        | 13        | 13        | 13        |
| Southeast | Oxbow30      | 3,365                              | 3,216         | 3,082         | 2,937         | 2,778         | 3  | 3         | 2         | 2         | 2         |
| Southeast | <b>Total</b> | <b>21,629</b>                      | <b>21,428</b> | <b>21,202</b> | <b>20,916</b> | <b>20,528</b> | <b>17</b>                                    | <b>17</b> | <b>17</b> | <b>17</b> | <b>17</b> |

|                  | Location | Colour |
|------------------|----------|--------|
| <b>Hub</b>       | Estevan  | Yellow |
| <b>Spoke</b>     | Oxbow    | Green  |
| <b>Sub-Spoke</b> | Carnduff | Blue   |

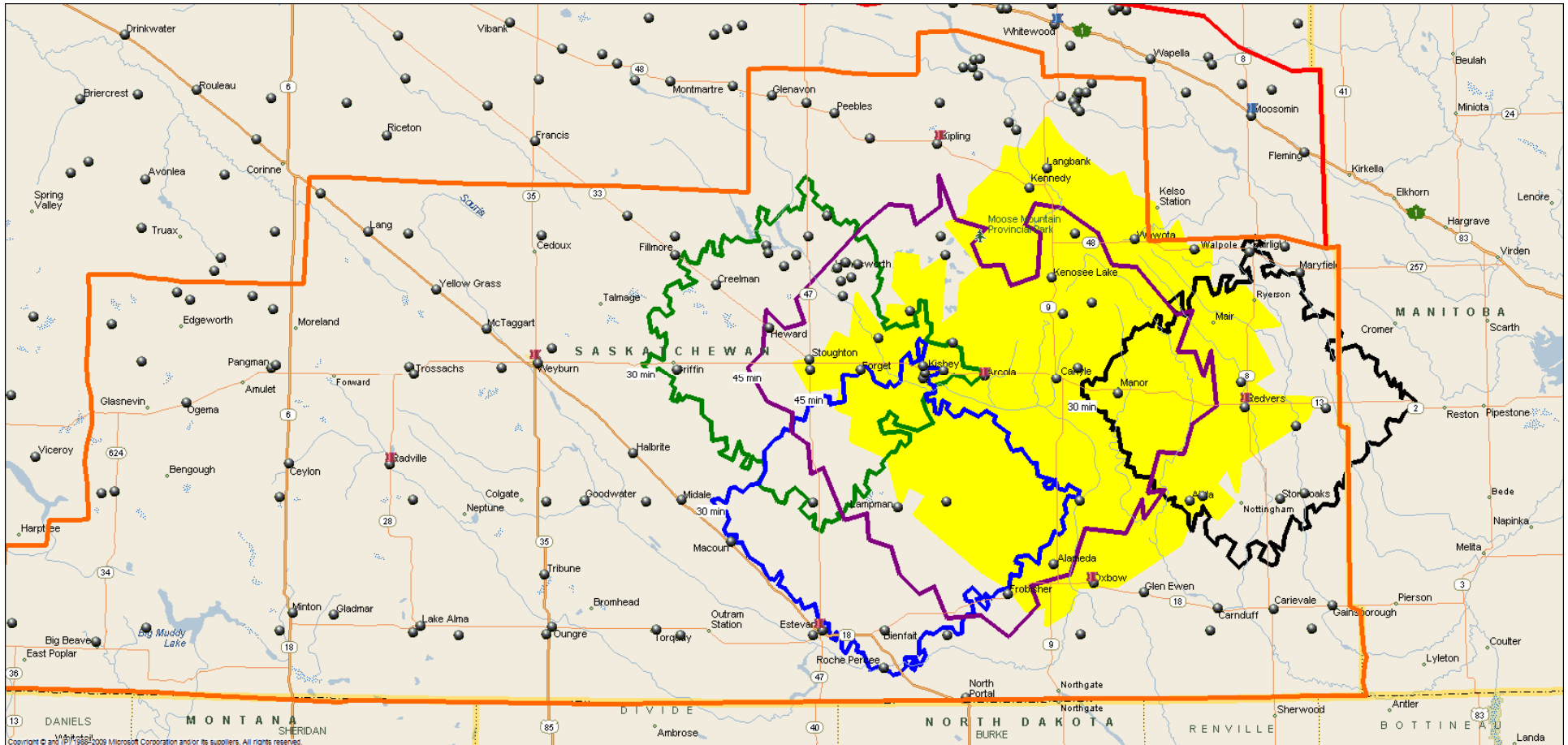
**Notes:**

Hub cities include a 45 min. Drive. All other drives are 30 minutes.

**Confidential**  
**- NOT FOR DISTRIBUTION -**  
**February 23, 2011**

**APPROVED CENTRAL EAST OPTION**

# Approved Central East: Arcola-Carlyle-Redvers



|           | Location                  | Colour           |
|-----------|---------------------------|------------------|
| Hub       | Arcola/Carlyle            | Purple/Yellow    |
| Spoke     | Redvers/Lampman/Stoughton | Black/Blue/Green |
| Sub-Spoke |                           |                  |

**Notes:**  
 Hub cities include a 45 min. Drive. All other drives are 30 minutes.

**Confidential**  
 - NOT FOR DISTRIBUTION -  
 January 18, 2011

# Approved Central East: Arcola-Carlyle-Redvers

- Estimated and Projected Population and Physicians -

| Name      | Hub-Spoke    | Estimated and Projected Population |               |               |               |               | Estimated and Projected Family Practitioners |          |          |          |          |
|-----------|--------------|------------------------------------|---------------|---------------|---------------|---------------|--|----------|----------|----------|----------|
|           |              | FY 2008                            | FY 2014       | FY 2019       | FY 2024       | FY 2029       | FY 2008                                      | FY 2014  | FY 2019  | FY 2024  | FY 2029  |
| Southeast | Arcola45     | 2,661                              | 2,602         | 2,576         | 2,552         | 2,502         | 2  | 2        | 2        | 2        | 2        |
| Southeast | Carlyle45    | 4,076                              | 4,024         | 3,964         | 3,881         | 3,771         | 3  | 3        | 3        | 3        | 3        |
| Southeast | Lampman30    | 1,219                              | 1,179         | 1,140         | 1,089         | 1,029         | 1  | 1        | 1        | 1        | 1        |
| Southeast | Redvers30    | 2,779                              | 2,660         | 2,549         | 2,428         | 2,300         | 2  | 2        | 2        | 2        | 2        |
| Southeast | Stoughton30  | 1,478                              | 1,436         | 1,400         | 1,366         | 1,330         | 1  | 1        | 1        | 1        | 1        |
| Southeast | <b>Total</b> | <b>12,212</b>                      | <b>11,901</b> | <b>11,629</b> | <b>11,316</b> | <b>10,931</b> | <b>9</b>                                     | <b>9</b> | <b>9</b> | <b>8</b> | <b>8</b> |

|                  | Location                  | Colour           |
|------------------|---------------------------|------------------|
| <b>Hub</b>       | Arcola/Carlyle            | Purple/Yellow    |
| <b>Spoke</b>     | Redvers/Lampman/Stoughton | Black/Blue/Green |
| <b>Sub-Spoke</b> |                           |                  |

**Notes:**

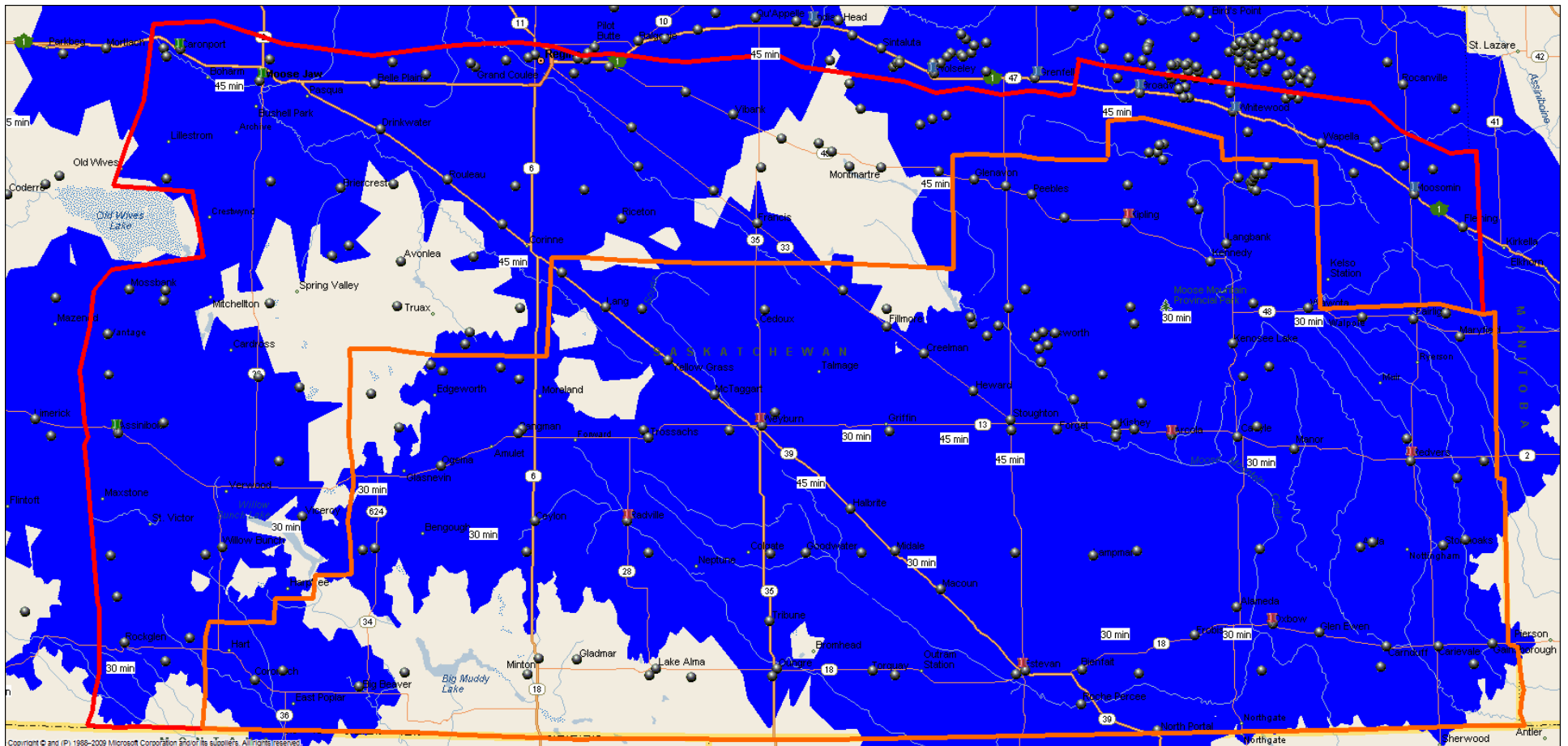
Hub cities include a 45 min. Drive. All other drives are 30 minutes.

**Confidential**  
**- NOT FOR DISTRIBUTION -**  
 January 18, 2011

# **SUMMARY OF APPROVED OPTIONS**



# Composite of Approved Options



| 2008 (est.)     | Unresolved Population | Unresolved Physicians |
|-----------------|-----------------------|-----------------------|
| SCHR            | 1,057                 | 1                     |
| SE Sask (other) | 3,335                 | 3                     |
| <b>Total</b>    | <b>4,392</b>          | <b>4</b>              |

**Confidential**  
**- NOT FOR DISTRIBUTION -**  
**February 23, 2011**

# Composite of Approved Options

- Estimated and Projected Population and Physicians -

| Location     | Estimated and Projected Population |         |         |         |         | Estimated and Projected Family Practitioners |         |         |         |         |
|--------------|------------------------------------|---------|---------|---------|---------|--|---------|---------|---------|---------|
|              | FY 2008                            | FY 2014 | FY 2019 | FY 2024 | FY 2029 | FY 2008                                      | FY 2014 | FY 2019 | FY 2024 | FY 2029 |
| Southwest    | 7,995                              | 7,364   | 6,890   | 6,451   | 5,986   | 6  | 6       | 5       | 5       | 5       |
| Northwest    | 257,600                            | 261,523 | 263,968 | 265,121 | 264,862 | 178  | 184     | 189     | 192     | 195     |
| North        | 8,542                              | 8,671   | 8,794   | 8,930   | 9,037   | 6  | 6       | 6       | 6       | 6       |
| Northeast    | 11,865                             | 11,397  | 10,964  | 10,500  | 9,969   | 11   | 10      | 10      | 10      | 9       |
| Southeast    | 21,629                             | 21,428  | 21,202  | 20,916  | 20,528  | 17   | 17      | 17      | 17      | 17      |
| Central East | 9,434                              | 9,241   | 9,080   | 8,888   | 8,632   | 7  | 7       | 7       | 6       | 6       |
| Central      | 17,319                             | 17,298  | 17,278  | 17,229  | 17,084  | 15   | 15      | 16      | 16      | 16      |

Confidential  
 - NOT FOR DISTRIBUTION -  
 February 23, 2011

# Next Steps

| ITEM | STEPS  | TIMEFRAME          |
|------|--|--------------------|
| 1.   | Board Approval – PHCP: Phase I (Practitioners)   | Feb. Board Mtg.    |
| 2.   | Update: <ul style="list-style-type: none"><li>•Ministry of Health</li><li>•RHAs (FHHR and RQHR)</li><li>•Physician Recruitment Board</li><li>•CPSS, SMA and others</li></ul>                 | February to March  |
| 3.   | Engage the following groups in order to develop an Implementation Plan: <ul style="list-style-type: none"><li>•RHAs (i.e., FHHR and RQHR)</li><li>•Physicians</li><li>•Communities</li></ul> | March to September |
| 4.   | Roll out Implementation plan through attrition and evolution   | March and on-wards |
| 5.   | On-going monitoring and validation of the plan.  | On-going           |

# Measures

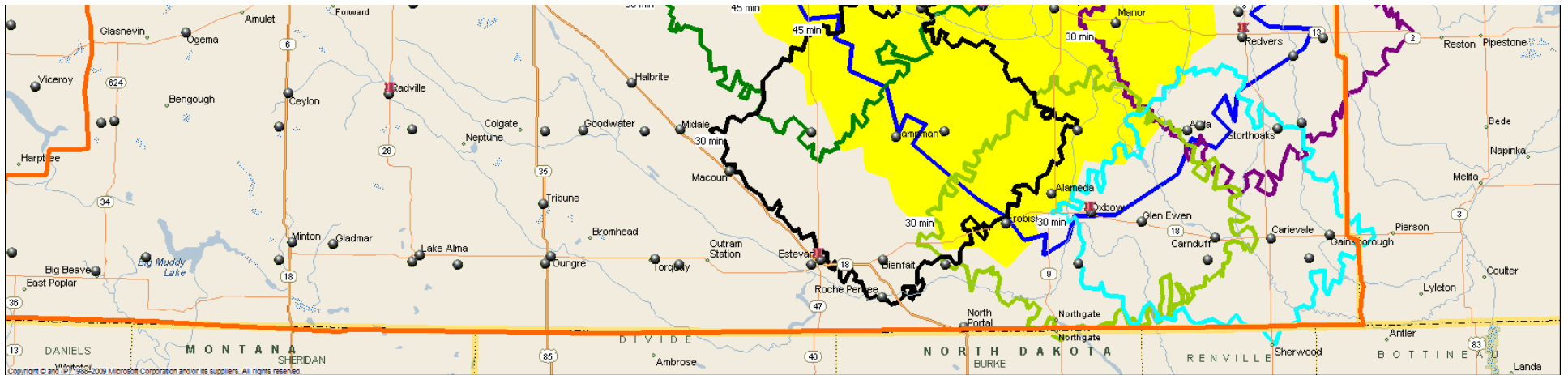
- **Sustainability:**
  - % annual physician turnover
- **Access:**
  - % Patients reporting a personal Family Physician
  - # Days to 3<sup>rd</sup> next available appointment
  - % avoidable Emergency Room visits
- **Quality of Life:**
  - Physician Satisfaction Survey
- **Health Status:**
  - Multiple measures available

**- END -**

# **ALTERNATIVE OPTIONS**

# **SOUTHEAST OPTIONS**

# Southeast A: Arcola-Carlyle-Oxbow-Redvers



|                  | Location                             | Colour                             |
|------------------|--------------------------------------|------------------------------------|
| <b>Hub</b>       | Arcola/Carlyle                       | Yellow/Blue                        |
| <b>Spoke</b>     | Redvers/Oxbow/ Lampman/<br>Stoughton | Purple/Light Green/<br>Black/Green |
| <b>Sub-Spoke</b> | Carnduff                             | Light Blue                         |

**Notes:**  
 Hub cities include a 45 min. Drive. All other drives are 30 minutes.

**DRAFT Results – Confidential  
 - NOT FOR DISTRIBUTION -  
 February 16, 2011**



# Southeast A : Arcola-Carlyle-Oxbow-Redvers

- Estimated and Projected Population and Physicians -

| Name      | Hub-Spoke    | Estimated and Projected Population |               |               |               |               | Estimated and Projected Family Practitioners |           |           |           |           |
|-----------|--------------|------------------------------------|---------------|---------------|---------------|---------------|--|-----------|-----------|-----------|-----------|
|           |              | FY 2008                            | FY 2014       | FY 2019       | FY 2024       | FY 2029       | FY 2008                                      | FY 2014   | FY 2019   | FY 2024   | FY 2029   |
| Southeast | Arcola45     | 2,634                              | 2,579         | 2,555         | 2,531         | 2,483         | 2  | 2         | 2         | 2         | 2         |
| Southeast | Carlyle45    | 4,336                              | 4,270         | 4,207         | 4,121         | 4,005         | 3  | 3         | 3         | 3         | 3         |
| Southeast | Carnduff30   | 1,630                              | 1,562         | 1,497         | 1,425         | 1,347         | 1  | 1         | 1         | 1         | 1         |
| Southeast | Lampman30    | 1,219                              | 1,179         | 1,140         | 1,089         | 1,029         | 1  | 1         | 1         | 1         | 1         |
| Southeast | Oxbow30      | 3,298                              | 3,152         | 3,018         | 2,873         | 2,714         | 3  | 2         | 2         | 2         | 2         |
| Southeast | Redvers30    | 2,635                              | 2,522         | 2,417         | 2,303         | 2,181         | 2  | 2         | 2         | 2         | 2         |
| Southeast | Stoughton30  | 1,225                              | 1,197         | 1,172         | 1,147         | 1,121         | 1  | 1         | 1         | 1         | 1         |
| Southeast | <b>Total</b> | <b>16,977</b>                      | <b>16,461</b> | <b>16,006</b> | <b>15,490</b> | <b>14,878</b> | <b>13</b>                                    | <b>13</b> | <b>12</b> | <b>12</b> | <b>12</b> |

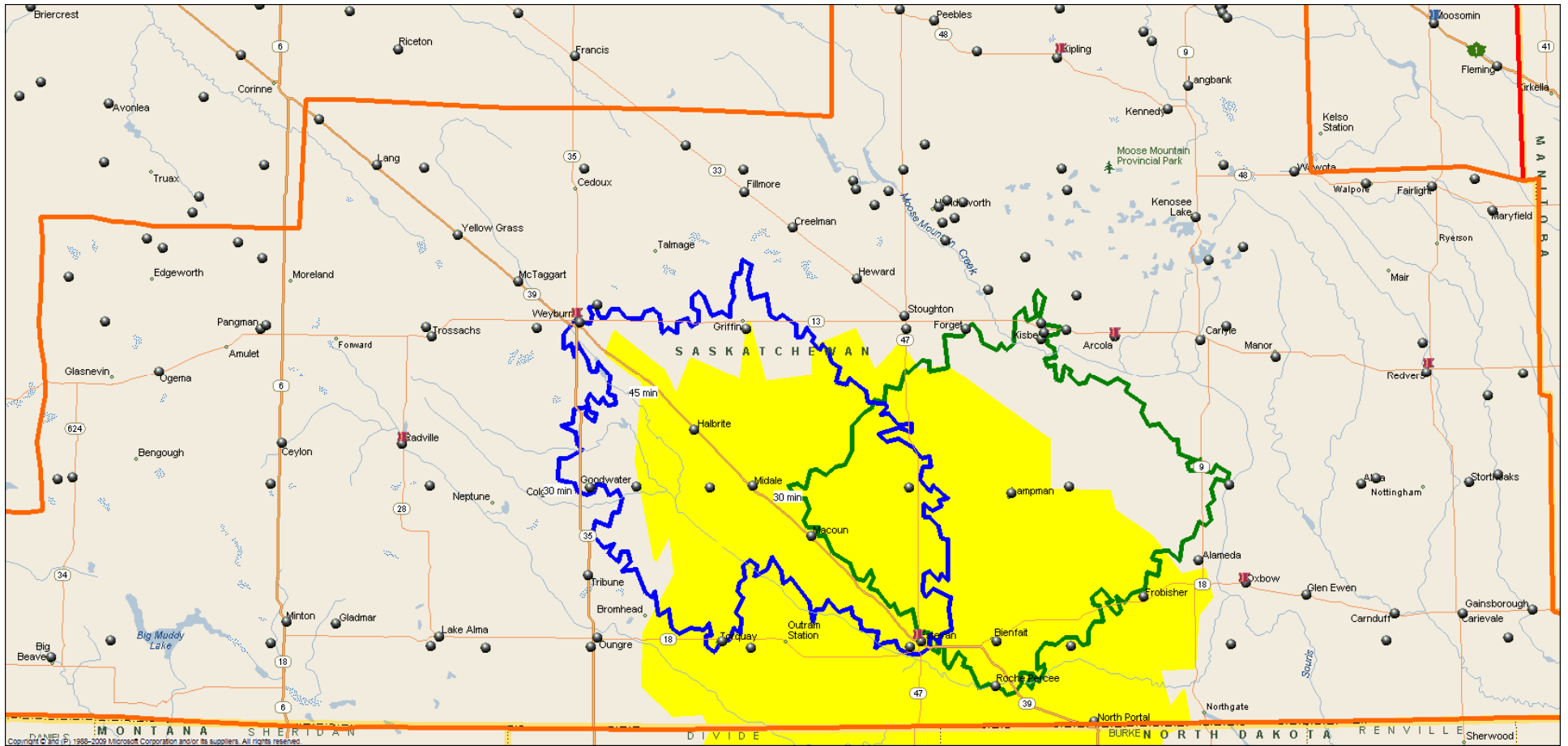
|                  | Location                             | Colour                             |
|------------------|--------------------------------------|------------------------------------|
| <b>Hub</b>       | Arcola/Carlyle                       | Yellow/Blue                        |
| <b>Spoke</b>     | Redvers/Oxbow/ Lampman/<br>Stoughton | Purple/Light Green/<br>Black/Green |
| <b>Sub-Spoke</b> | Carnduff                             | Light Blue                         |

**Notes:**

Hub cities include a 45 min. Drive. All other drives are 30 minutes.

**DRAFT Results – Confidential**  
**- NOT FOR DISTRIBUTION -**  
 February 16, 2011

# Southeast B: Estevan



|           | Location       | Colour     |
|-----------|----------------|------------|
| Hub       | Estevan        | Yellow     |
| Spoke     | Lampman/Midale | Green/Blue |
| Sub-Spoke |                |            |

**Notes:**  
 Hub cities include a 45 min. Drive. All other drives are 30 minutes.

**DRAFT Results – Confidential  
 - NOT FOR DISTRIBUTION -  
 February 16, 2011**

# Southeast B: Estevan

- Estimated and Projected Population and Physicians -

| Name      | Hub-Spoke | Estimated and Projected Population |         |         |         |         | Estimated and Projected Family Practitioners |         |         |         |         |
|-----------|-----------|------------------------------------|---------|---------|---------|---------|--|---------|---------|---------|---------|
|           |           | FY 2008                            | FY 2014 | FY 2019 | FY 2024 | FY 2029 | FY 2008                                      | FY 2014 | FY 2019 | FY 2024 | FY 2029 |
| Southeast | Estevan45 | 14,956                             | 15,032  | 15,071  | 15,080  | 15,015  | 12   | 12      | 13      | 13      | 13      |
| Southeast | Lampman30 | 1,521                              | 1,483   | 1,458   | 1,429   | 1,388   | 1  | 1       | 1       | 1       | 1       |
| Southeast | Midale30  | 1,067                              | 1,015   | 974     | 933     | 884     | 1  | 1       | 1       | 1       | 1       |
| Southeast | Total     | 17,544                             | 17,529  | 17,503  | 17,442  | 17,287  | 14   | 14      | 14      | 14      | 15      |

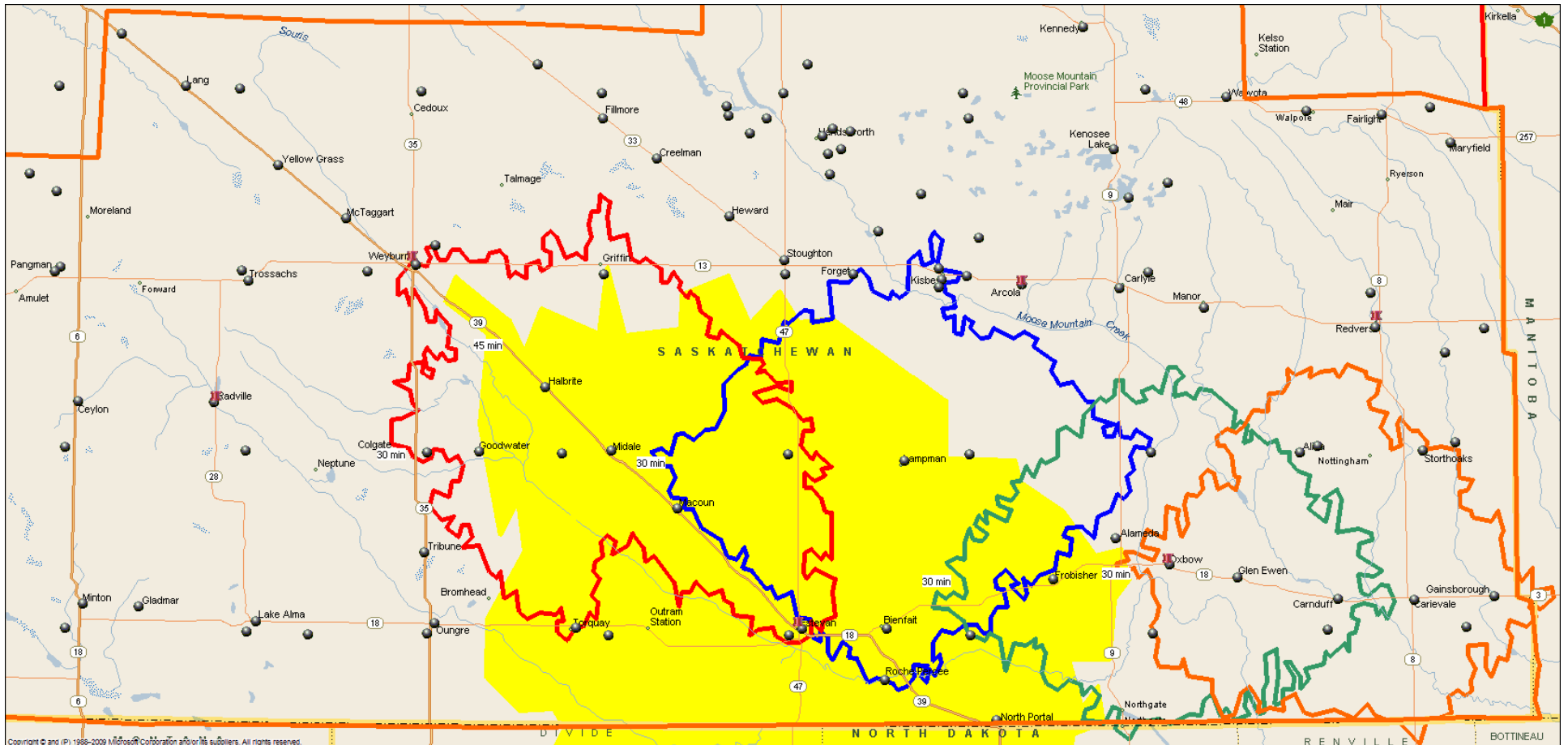
|           | Location       | Colour     |
|-----------|----------------|------------|
| Hub       | Estevan        | Yellow     |
| Spoke     | Lampman/Midale | Green/Blue |
| Sub-Spoke |                |            |

**Notes:**

Hub cities include a 45 min. Drive. All other drives are 30 minutes.

DRAFT Results – Confidential  
- NOT FOR DISTRIBUTION -  
February 16, 2011

# Southeast E: Estevan



|                  | Location             | Colour         |
|------------------|----------------------|----------------|
| <b>Hub</b>       | Estevan              | Yellow         |
| <b>Spoke</b>     | Midale/Lampman/Oxbow | Red/Blue/Green |
| <b>Sub-Spoke</b> | Carnduff             | Orange         |

**Notes:**  
 Hub cities include a 45 min. Drive. All other drives are 30 minutes.

**DRAFT Results – Confidential  
 - NOT FOR DISTRIBUTION -  
 February 16, 2011**

# Southeast E: Estevan

- Estimated and Projected Population and Physicians -

| Hub_Spoke  | Pop08  | Pop14  | Pop19  | Pop24  | Pop29  | MD08 | MD14 | MD19 | MD24 | MD29 |
|------------|--------|--------|--------|--------|--------|------|------|------|------|------|
| Carnduff30 | 2,793  | 2,680  | 2,567  | 2,439  | 2,304  | 2    | 2    | 2    | 2    | 2    |
| Estevan45  | 14,253 | 14,363 | 14,428 | 14,465 | 14,433 | 12   | 12   | 12   | 12   | 12   |
| Lampman30  | 1,526  | 1,458  | 1,402  | 1,341  | 1,267  | 1    | 1    | 1    | 1    | 1    |
| Midale30   | 1,555  | 1,476  | 1,417  | 1,358  | 1,289  | 1    | 1    | 1    | 1    | 1    |
| Oxbow30    | 2,817  | 2,688  | 2,575  | 2,457  | 2,325  | 2    | 2    | 2    | 2    | 2    |

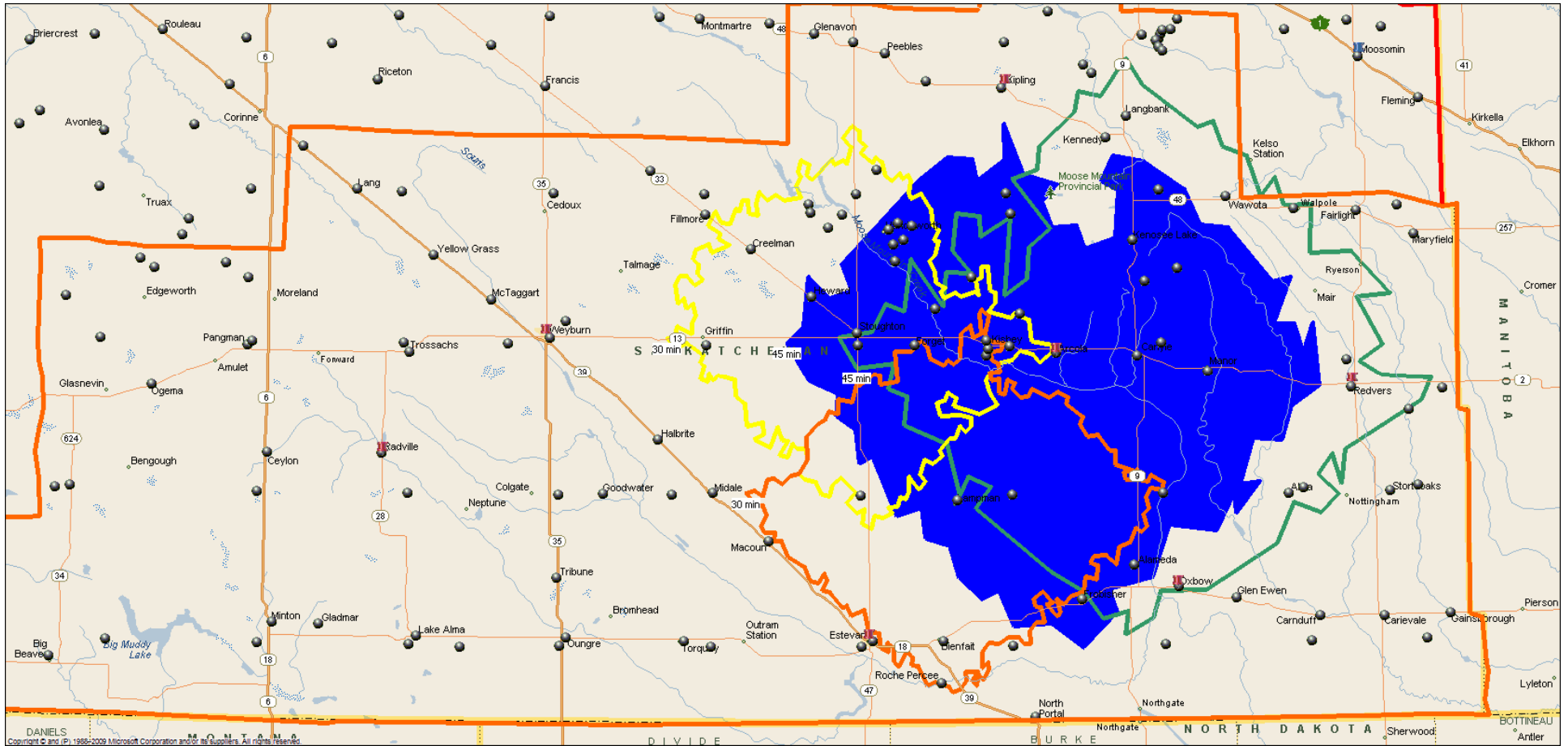
|           | Location             | Colour         |
|-----------|----------------------|----------------|
| Hub       | Estevan              | Yellow         |
| Spoke     | Midale/Lampman/Oxbow | Red/Blue/Green |
| Sub-Spoke | Carnduff             | Orange         |

**Notes:**

Hub cities include a 45 min. Drive. All other drives are 30 minutes.

DRAFT Results – Confidential  
- NOT FOR DISTRIBUTION -  
February 16, 2011

# Southeast F: Arcola-Carlyle



|           | Location          | Colour        |
|-----------|-------------------|---------------|
| Hub       | Arcola/Carlyle    | Blue/Green    |
| Spoke     | Lampman/Stoughton | Orange/Yellow |
| Sub-Spoke |                   |               |

**Notes:**  
 Hub cities include a 45 min. Drive. All other drives are 30 minutes.

**DRAFT Results – Confidential  
 - NOT FOR DISTRIBUTION -  
 February 16, 2011**

# Southeast F: Arcola-Carlyle

- Estimated and Projected Population and Physicians -

| Hub_Spoke   | Pop08 | Pop14 | Pop19 | Pop24 | Pop29 | MD08 | MD14 | MD19 | MD24 | MD29 |
|-------------|-------|-------|-------|-------|-------|------|------|------|------|------|
| Arcola45    | 1,429 | 1,418 | 1,424 | 1,432 | 1,429 | 1    | 1    | 1    | 1    | 1    |
| Carlyle45   | 8,216 | 8,009 | 7,829 | 7,621 | 7,363 | 6    | 6    | 6    | 6    | 6    |
| Lampman30   | 2,176 | 2,070 | 1,981 | 1,884 | 1,771 | 2    | 2    | 1    | 1    | 1    |
| Stoughton30 | 2,429 | 2,325 | 2,234 | 2,135 | 2,024 | 2    | 2    | 2    | 2    | 2    |

|           | Location          | Colour        |
|-----------|-------------------|---------------|
| Hub       | Arcola/Carlyle    | Blue/Green    |
| Spoke     | Lampman/Stoughton | Orange/Yellow |
| Sub-Spoke |                   |               |

**Notes:**

Hub cities include a 45 min. Drive. All other drives are 30 minutes.

DRAFT Results – Confidential  
 - NOT FOR DISTRIBUTION -  
 February 16, 2011