

Primary Health Care Plan: Phase One (Practitioners)

Board Approved
February 23, 2011

GUIDING PRINCIPLES

Affirmed by Board.

Guiding Principles

- The Plan must be sustainable over time and must have stability.
- The Plan must ensure equitable patient access to primary care.
- The Plan must ensure that practitioners working in southeast Saskatchewan feel they have an appropriate quality of life, with manageable patient workload and remuneration reflecting their contribution to the health care system.
- The Plan must achieve a full scope of practice.

Guiding Principles

- The Plan must address the health status of the population in the catchment area, taking into consideration socio-economic factors, employment opportunities, education, and demographic factors.
- The Plan will embrace a range of primary care providers, including physicians, nurses, midwives and others. These resources will be based upon population need and critical mass.
- The Plan must ensure continuity in the delivery of health care.
- The structure and operations of the Plan will be evidence-based.
- The Plan must reflect best practice principles.

Guiding Principles

- The Plan will ensure that there will be no single physician self-contained practices and that all practices will be collaborative.
- Implementation of the Plan will be a collaborate effort involving community representation, family practice physicians, other health care professionals, and the Regional Health Authorities.
- The Plan must reflect any applicable legislative requirements.
- The Plan must reflect the applicable expectations of the College of Physicians & Surgeons of Saskatchewan.
- The Plan must reflect the ideal model of practitioner coverage but also must consider existing facility placement.

PLANNING FILTERS

Affirmed by Board.

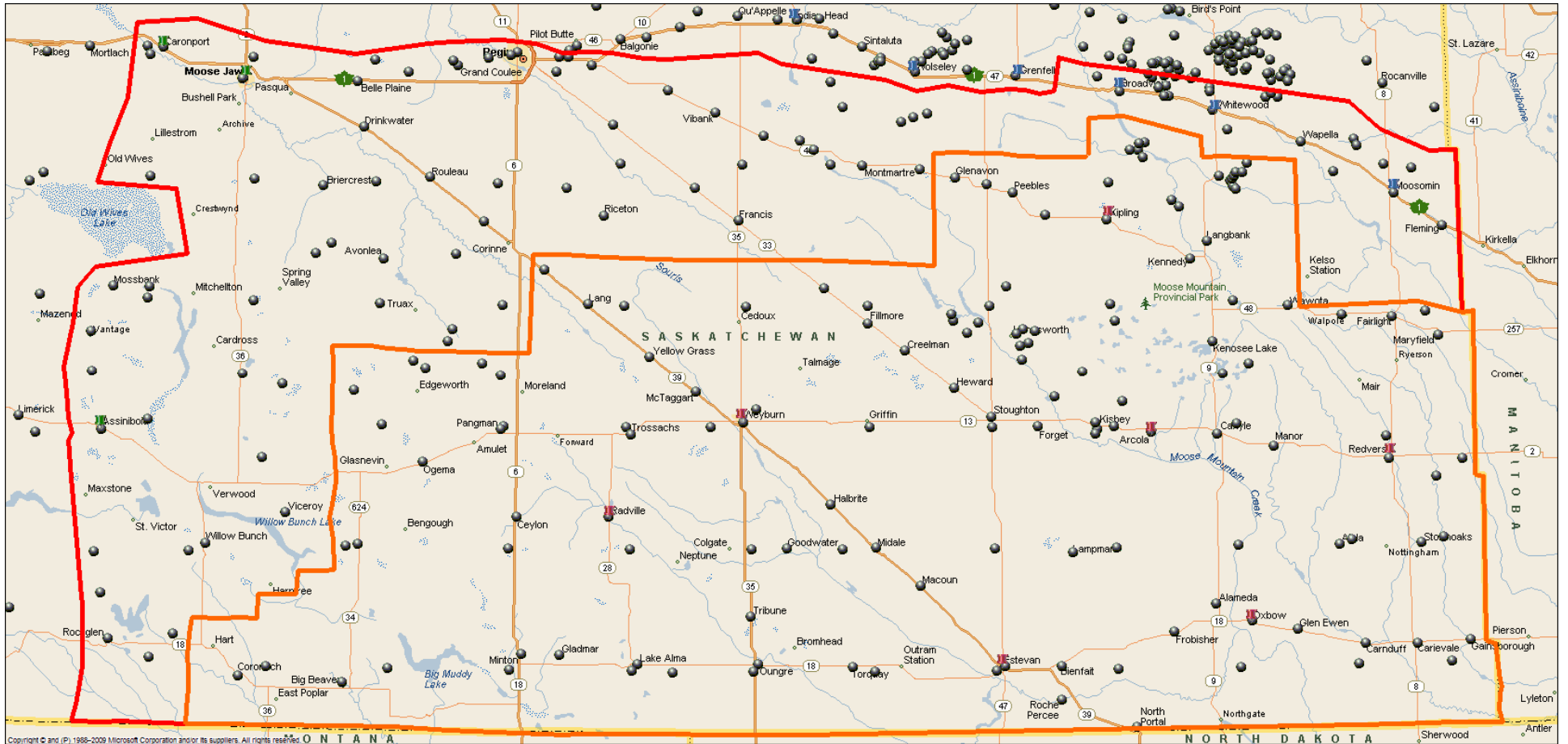
Planning Filters

- Travel time by a practitioner to a patient shall not exceed the provincial guideline of a maximum of 45 minutes and ideally, shall not exceed 30 minutes.
- Travel time by a patient to a practitioner shall not exceed 45 minutes to a hub and 30 minutes to a spoke.
- The mix of hub and spokes, based on the noted travel times, will cover in excess of 95% of the population.
- The on-call schedule will ideally be 1:5, and no community will have less than three primary care practitioners.
- The smallest group practice will be three primary care practitioners per 3,000 population.
- Current retail shopping patterns will be reflected in the model.

APPROVED OPTIONS

Overview Map

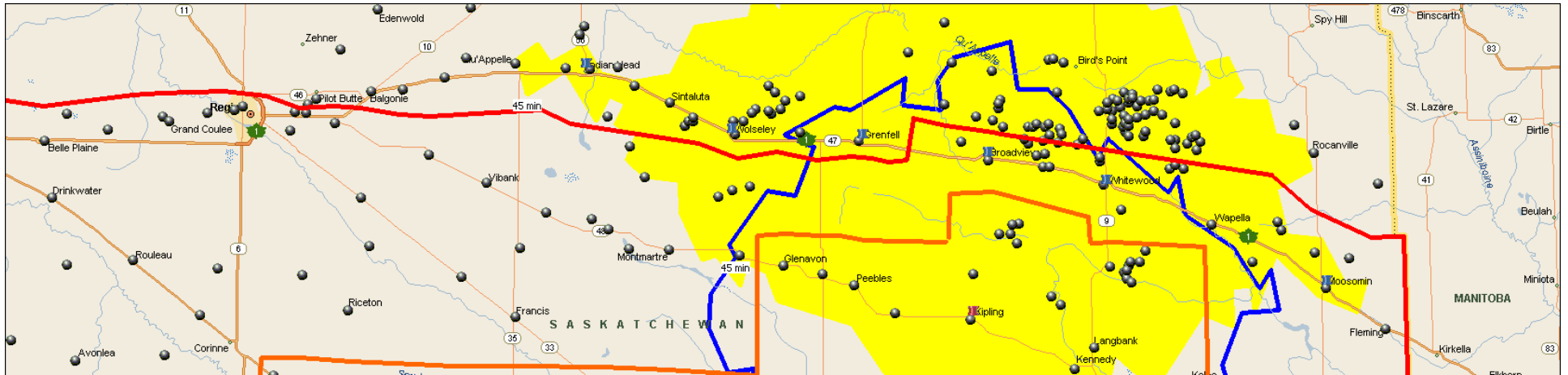
(Includes South Eastern Saskatchewan and SCHR Boundaries)



DRAFT Results – Confidential – NOT FOR DISTRIBUTION

APPROVED NORTH OPTION

Approved North: Broadview-Kipling



	Location	Colour
Hub	Broadview/Kipling	Yellow/Blue
Spoke		
Sub-Spoke		

Notes:
 Hub cities include a 45 min. Drive. All other drives are 30 minutes.

Confidential
 - NOT FOR DISTRIBUTION -
 February 23, 2011

Approved North: Broadview-Kipling

- Estimated and Projected Population and Physicians -

Name	Hub-Spoke	Estimated and Projected Population					Estimated and Projected Family Practitioners				
		FY 2008	FY 2014	FY 2019	FY 2024	FY 2029	FY 2008	FY 2014	FY 2019	FY 2024	FY 2029
North	Broadview45	4,578	4,870	5,141	5,438	5,721	3	3	3	3	3
North	Kipling45	3,964	3,801	3,652	3,492	3,316	3	3	3	3	3
North	Total	8,542	8,671	8,794	8,930	9,037	6	6	6	6	6

	Location	Colour
Hub	Broadview/Kipling	Yellow/Blue
Spoke		
Sub-Spoke		

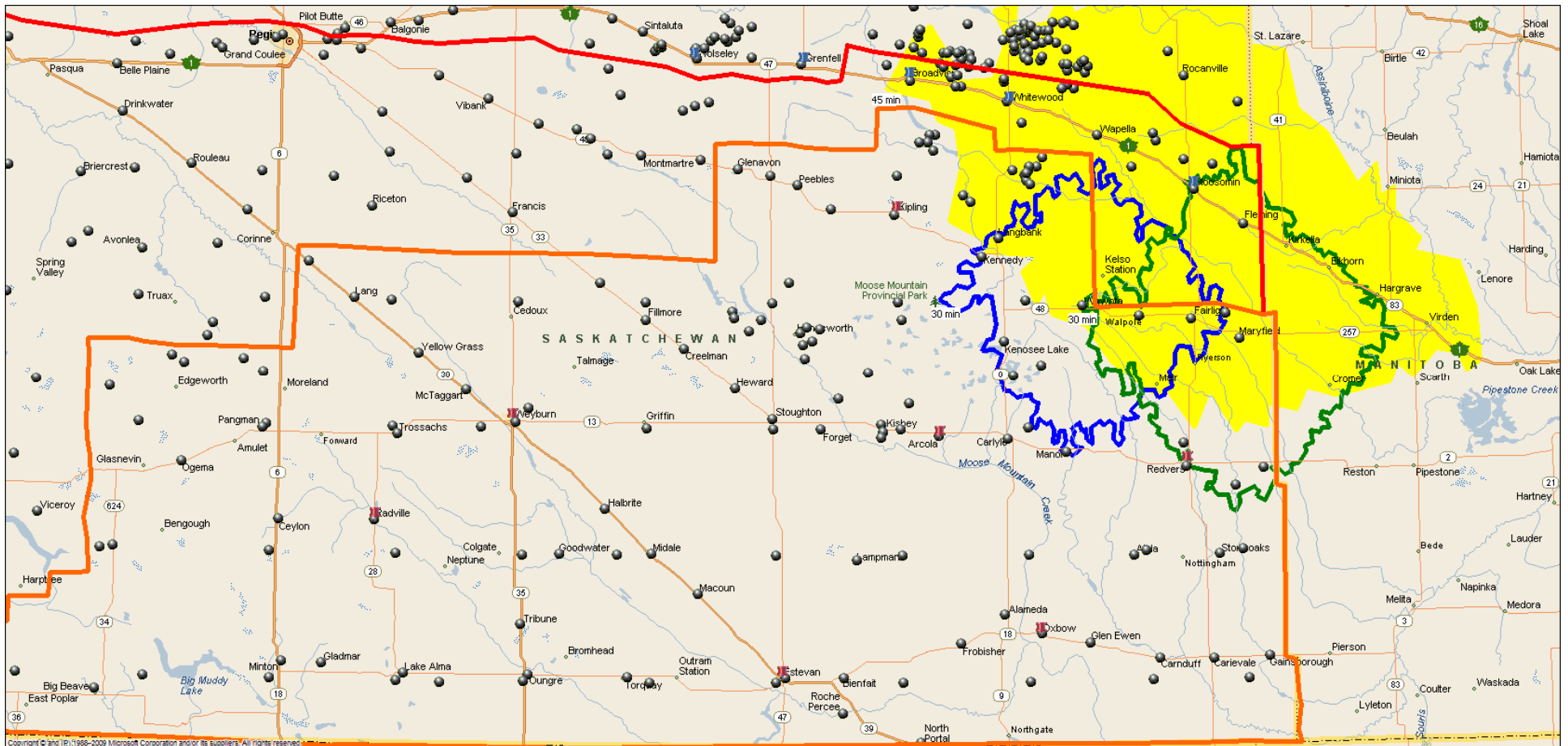
Notes:

Hub cities include a 45 min. Drive. All other drives are 30 minutes.

Confidential
- NOT FOR DISTRIBUTION -
February 23, 2011

APPROVED NORTHEAST OPTION

Approved Northeast: Moosomin



	Location	Colour
Hub	Moosomin	Yellow
Spoke	Wawota/Maryfield	Blue/Green
Sub-Spoke		

Notes:
 Hub cities include a 45 min. Drive. All other drives are 30 minutes.

Confidential
 - NOT FOR DISTRIBUTION -
 January 18, 2011

Approved Northeast: Moosomin

- Estimated and Projected Population and Physicians -

Name	Hub-Spoke	Estimated and Projected Population					Estimated and Projected Family Practitioners				
		FY 2008	FY 2014	FY 2019	FY 2024	FY 2029	FY 2008	FY 2014	FY 2019	FY 2024	FY 2029
Northeast	Maryfield30	1,433	1,373	1,319	1,261	1,197	1	1	1	1	1
Northeast	Moosimin45	7,041	6,769	6,516	6,253	5,944	7	6	6	6	6
Northeast	Wawota30	1,121	1,074	1,038	998	949	1	1	1	1	1
Northeast	Total	9,594	9,216	8,873	8,512	8,091	9	9	8	8	8

	Location	Colour
Hub	Moosomin	Yellow
Spoke	Wawota/Maryfield	Blue/Green
Sub-Spoke		

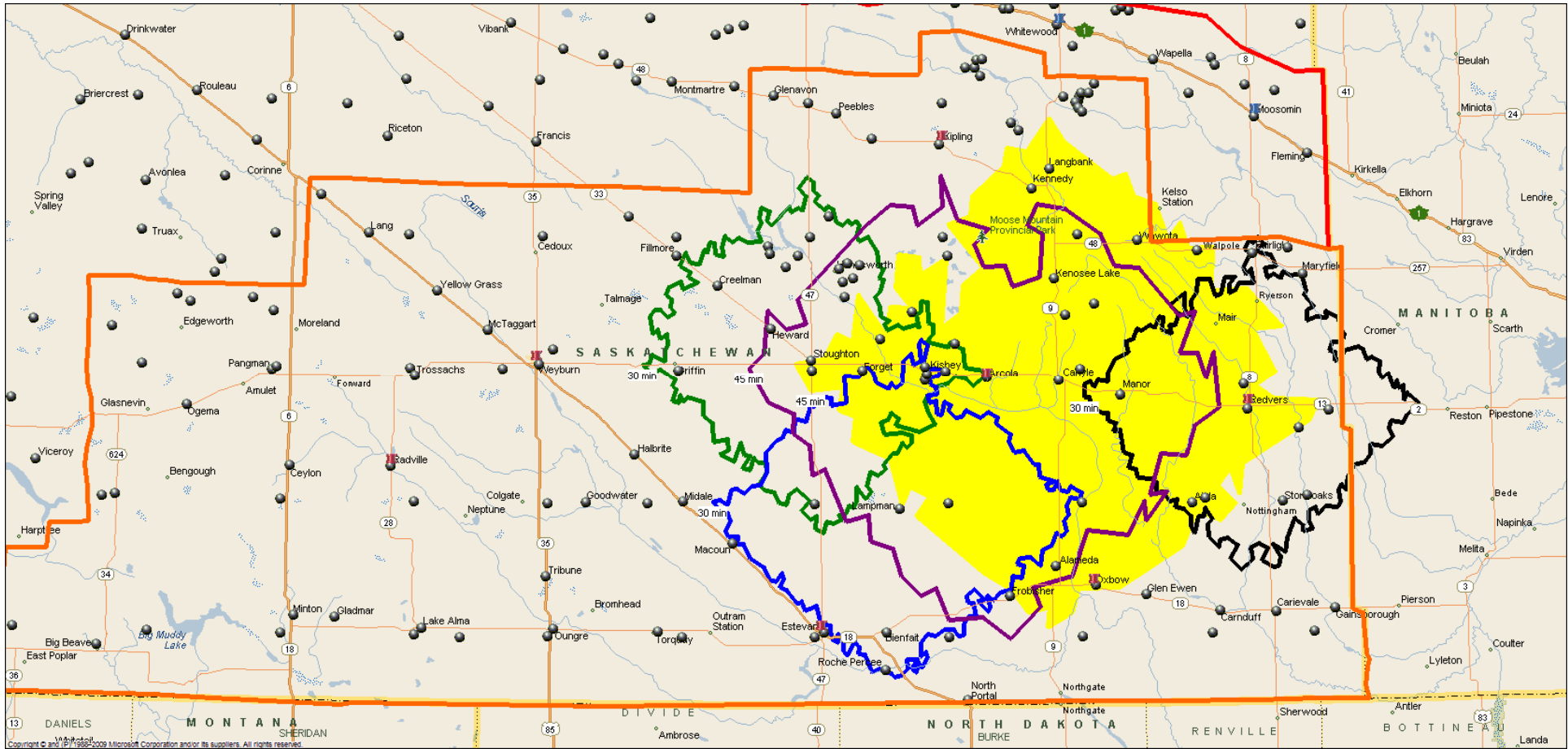
Notes:

Hub cities include a 45 min. Drive. All other drives are 30 minutes.

Confidential
 - NOT FOR DISTRIBUTION -
 January 18, 2011

APPROVED CENTRAL EAST OPTION

Approved Central East: Arcola-Carlyle-Redvers



	Location	Colour
Hub	Arcola/Carlyle	Purple/Yellow
Spoke	Redvers/Lampman/Stoughton	Black/Blue/Green
Sub-Spoke		

Notes:
 Hub cities include a 45 min. Drive. All other drives are 30 minutes.

Confidential
 - NOT FOR DISTRIBUTION -
 January 18, 2011

Approved Central East: Arcola-Carlyle-Redvers

- Estimated and Projected Population and Physicians -

Name	Hub-Spoke	Estimated and Projected Population					Estimated and Projected Family Practitioners				
		FY 2008	FY 2014	FY 2019	FY 2024	FY 2029	FY 2008	FY 2014	FY 2019	FY 2024	FY 2029
Southeast	Arcola45	2,661	2,602	2,576	2,552	2,502	2	2	2	2	2
Southeast	Carlyle45	4,076	4,024	3,964	3,881	3,771	3	3	3	3	3
Southeast	Lampman30	1,219	1,179	1,140	1,089	1,029	1	1	1	1	1
Southeast	Redvers30	2,779	2,660	2,549	2,428	2,300	2	2	2	2	2
Southeast	Stoughton30	1,478	1,436	1,400	1,366	1,330	1	1	1	1	1
Southeast	Total	12,212	11,901	11,629	11,316	10,931	9	9	9	8	8

	Location	Colour
Hub	Arcola/Carlyle	Purple/Yellow
Spoke	Redvers/Lampman/Stoughton	Black/Blue/Green
Sub-Spoke		

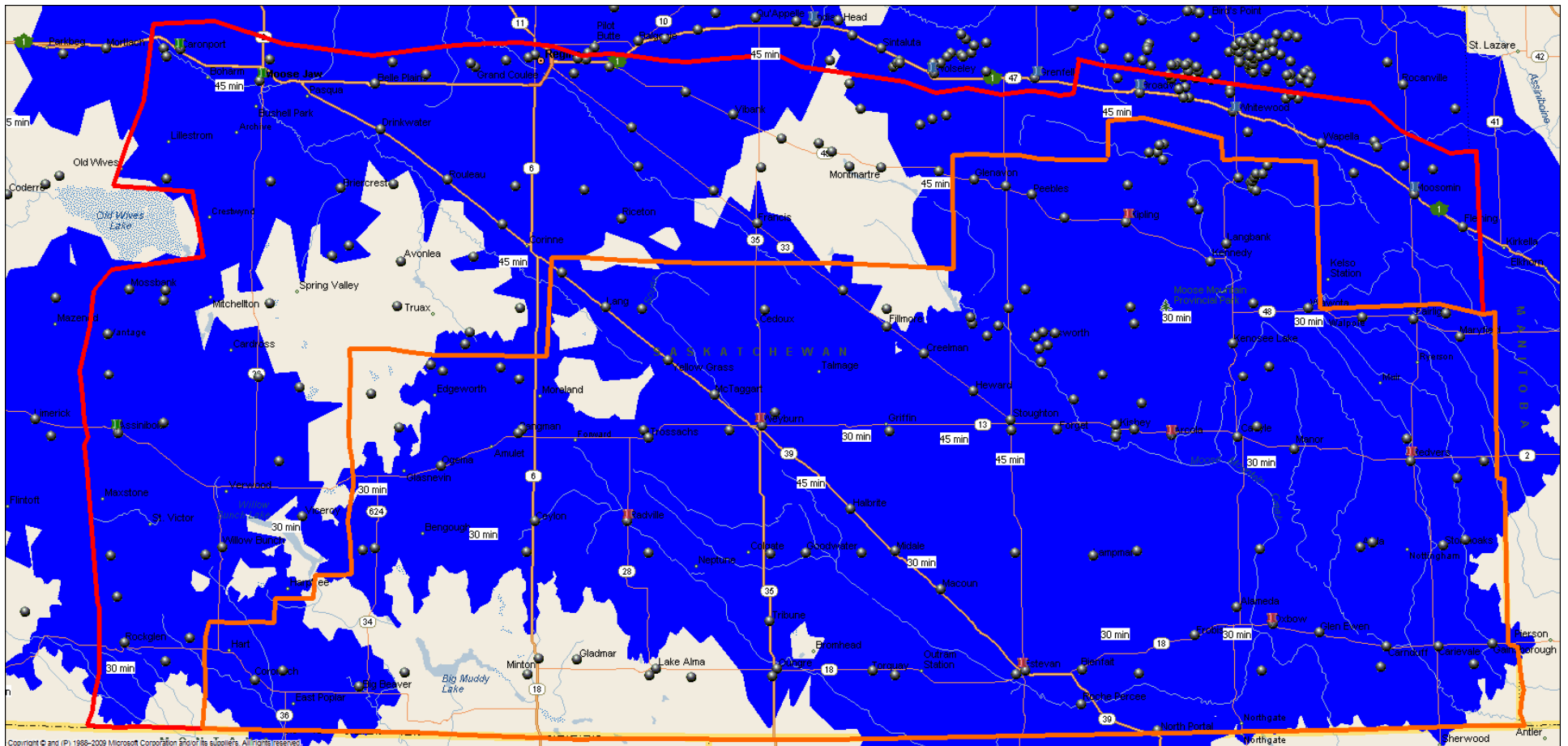
Notes:

Hub cities include a 45 min. Drive. All other drives are 30 minutes.

Confidential
- NOT FOR DISTRIBUTION -
 January 18, 2011

SUMMARY OF APPROVED OPTIONS

Composite of Approved Options



2008 (est.)	Unresolved Population	Unresolved Physicians
SCHR	1,057	1
SE Sask (other)	3,335	3
Total	4,392	4

Confidential
- NOT FOR DISTRIBUTION -
February 23, 2011

Composite of Approved Options

- Estimated and Projected Population and Physicians -

Location	Estimated and Projected Population					Estimated and Projected Family Practitioners				
	FY 2008	FY 2014	FY 2019	FY 2024	FY 2029	FY 2008	FY 2014	FY 2019	FY 2024	FY 2029
Southwest	7,995	7,364	6,890	6,451	5,986	6	6	5	5	5
Northwest	257,600	261,523	263,968	265,121	264,862	178	184	189	192	195
North	8,542	8,671	8,794	8,930	9,037	6	6	6	6	6
Northeast	11,865	11,397	10,964	10,500	9,969	11	10	10	10	9
Southeast	21,629	21,428	21,202	20,916	20,528	17	17	17	17	17
Central East	9,434	9,241	9,080	8,888	8,632	7	7	7	6	6
Central	17,319	17,298	17,278	17,229	17,084	15	15	16	16	16

Confidential
 - NOT FOR DISTRIBUTION -
 February 23, 2011

Next Steps

ITEM	STEPS	TIMEFRAME
1.	Board Approval – PHCP: Phase I (Practitioners)	Feb. Board Mtg.
2.	Update: <ul style="list-style-type: none"> •Ministry of Health •RHAs (FHHR and RQHR) •Physician Recruitment Board •CPSS, SMA and others 	February to March
3.	Engage the following groups in order to develop an Implementation Plan: <ul style="list-style-type: none"> •RHAs (i.e., FHHR and RQHR) •Physicians •Communities 	March to September
4.	Roll out Implementation plan through attrition and evolution	March and on-wards
5.	On-going monitoring and validation of the plan.	On-going

Measures

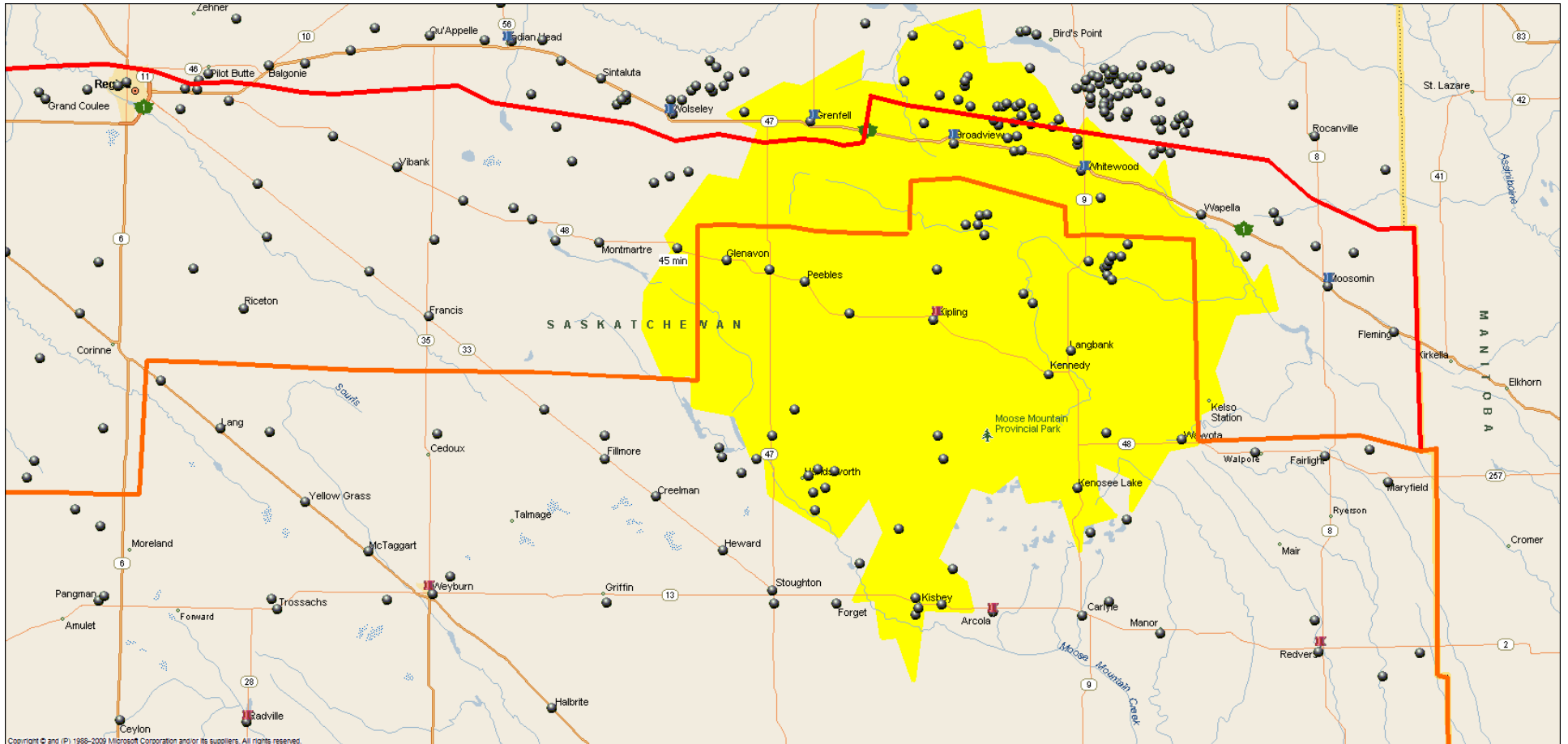
- **Sustainability:**
 - % annual physician turnover
- **Access:**
 - % Patients reporting a personal Family Physician
 - # Days to 3rd next available appointment
 - % avoidable Emergency Room visits
- **Quality of Life:**
 - Physician Satisfaction Survey
- **Health Status:**
 - Multiple measures available

- END -

ALTERNATIVE OPTIONS

NORTH OPTIONS

North A: Kipling



	Location	Colour
Hub	Kipling	Yellow
Spoke		
Sub-Spoke		

Notes:
 Hub cities include a 45 min. Drive. All other drives are 30 minutes.

**DRAFT Results – Confidential
 - NOT FOR DISTRIBUTION -
 February 16, 2011**

North A: Kipling

- Estimated and Projected Population and Physicians -

Name	Hub-Spoke	Estimated and Projected Population					Estimated and Projected Family Practitioners				
		FY 2008	FY 2014	FY 2019	FY 2024	FY 2029	FY 2008	FY 2014	FY 2019	FY 2024	FY 2029
North	Kipling45	3,964	3,801	3,652	3,492	3,316	3	3	3	3	3
North	Total	3,964	3,801	3,652	3,492	3,316	3	3	3	3	3

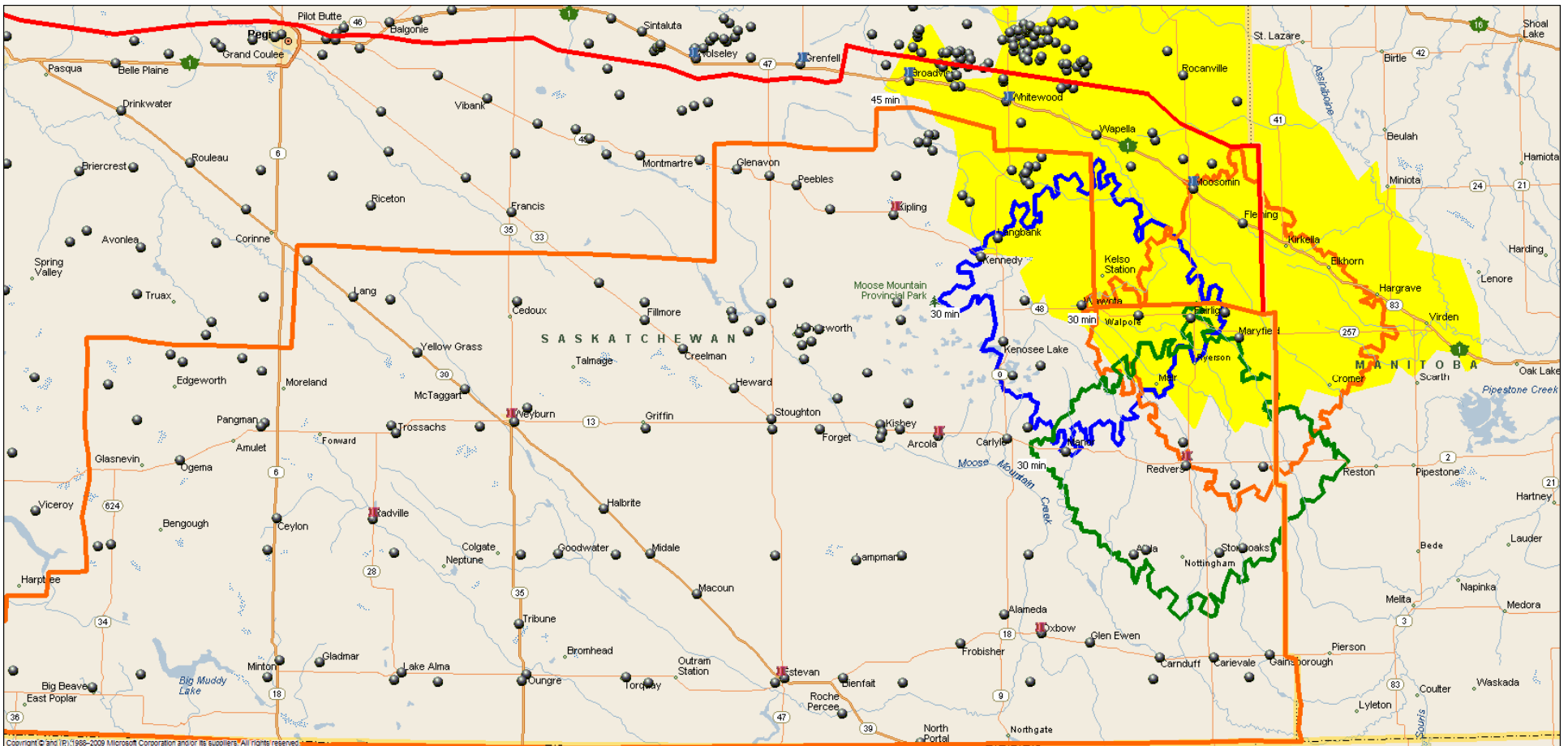
	Location	Colour
Hub	Kipling	Yellow
Spoke		
Sub-Spoke		

Notes:
 Hub cities include a 45 min. Drive. All other drives are 30 minutes.

**DRAFT Results – Confidential
 - NOT FOR DISTRIBUTION -
 February 16, 2011**

NORTHEAST OPTIONS

Northeast A: Moosimin-Redvers



	Location	Colour
Hub	Moosimin	Yellow
Spoke	Wawota/Maryfield/Redvers	Blue/Orange/Green
Sub-Spoke		

Notes:
 Hub cities include a 45 min. Drive. All other drives are 30 minutes.

**DRAFT Results – Confidential
 - NOT FOR DISTRIBUTION -
 February 16, 2011**

Northeast A: Moosimin-Redvers

- Estimated and Projected Population and Physicians -

Name	Hub-Spoke	Estimated and Projected Population					Estimated and Projected Family Practitioners				
		FY 2008	FY 2014	FY 2019	FY 2024	FY 2029	FY 2008	FY 2014	FY 2019	FY 2024	FY 2029
Northeast	Maryfield30	898	869	836	797	754	1	1	1	1	1
Northeast	Moosimin45	7,041	6,769	6,516	6,253	5,944	7	6	6	6	6
Northeast	Redvers30	2,806	2,684	2,572	2,452	2,322	2	2	2	2	2
Northeast	Wawota30	1,121	1,074	1,038	998	949	1	1	1	1	1
Northeast	Total	11,865	11,397	10,964	10,500	9,969	11	10	10	10	9

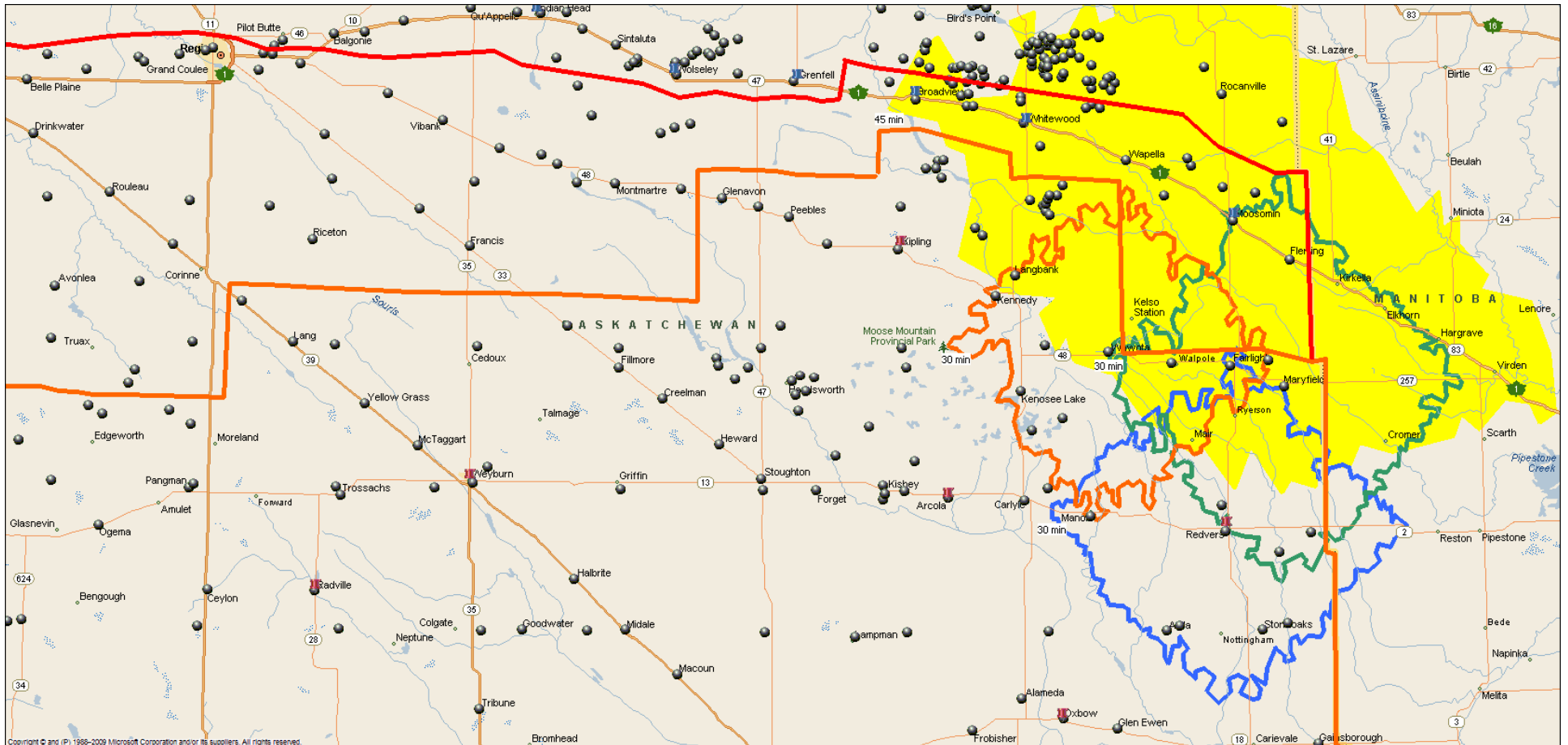
	Location	Colour
Hub	Moosimin	Yellow
Spoke	Wawota/Maryfield/Redvers	Blue/Orange/Green
Sub-Spoke		

Notes:

Hub cities include a 45 min. Drive. All other drives are 30 minutes.

**DRAFT Results – Confidential
- NOT FOR DISTRIBUTION -
February 16, 2011**

Northeast B: Moosimin



	Location	Colour
Hub	Moosimin	Yellow
Spoke	Maryfield/Wawota/Redvers	Green/Orange/Blue
Sub-Spoke		

Notes:
 Hub cities include a 45 min. Drive. All other drives are 30 minutes.

**DRAFT Results – Confidential
 - NOT FOR DISTRIBUTION -
 February 16, 2011**

Northeast B: Moosimin

- Estimated and Projected Population and Physicians -

Hub_Spoke	Pop08	Pop14	Pop19	Pop24	Pop29	MD08	MD14	MD19	MD24	MD29
Maryfield30	761	736	708	676	641	1	1	1	1	1
Moosimin45	8,173	7,961	7,767	7,570	7,319	7	7	7	7	7
Redvers30	2,806	2,684	2,572	2,452	2,322	2	2	2	2	2
Wawota30	2,517	2,563	2,612	2,652	2,667	2	2	2	2	2

	Location	Colour
Hub	Moosimin	Yellow
Spoke	Maryfield/Wawota/Redvers	Green/Orange/Blue
Sub-Spoke		

Notes:

Hub cities include a 45 min. Drive. All other drives are 30 minutes.

DRAFT Results – Confidential
 - NOT FOR DISTRIBUTION -
 February 16, 2011

SOUTHEAST OPTIONS

Southeast A : Arcola-Carlyle-Oxbow-Redvers

- Estimated and Projected Population and Physicians -

Name	Hub-Spoke	Estimated and Projected Population					Estimated and Projected Family Practitioners				
		FY 2008	FY 2014	FY 2019	FY 2024	FY 2029	FY 2008	FY 2014	FY 2019	FY 2024	FY 2029
Southeast	Arcola45	2,634	2,579	2,555	2,531	2,483	2	2	2	2	2
Southeast	Carlyle45	4,336	4,270	4,207	4,121	4,005	3	3	3	3	3
Southeast	Carnduff30	1,630	1,562	1,497	1,425	1,347	1	1	1	1	1
Southeast	Lampman30	1,219	1,179	1,140	1,089	1,029	1	1	1	1	1
Southeast	Oxbow30	3,298	3,152	3,018	2,873	2,714	3	2	2	2	2
Southeast	Redvers30	2,635	2,522	2,417	2,303	2,181	2	2	2	2	2
Southeast	Stoughton30	1,225	1,197	1,172	1,147	1,121	1	1	1	1	1
Southeast	Total	16,977	16,461	16,006	15,490	14,878	13	13	12	12	12

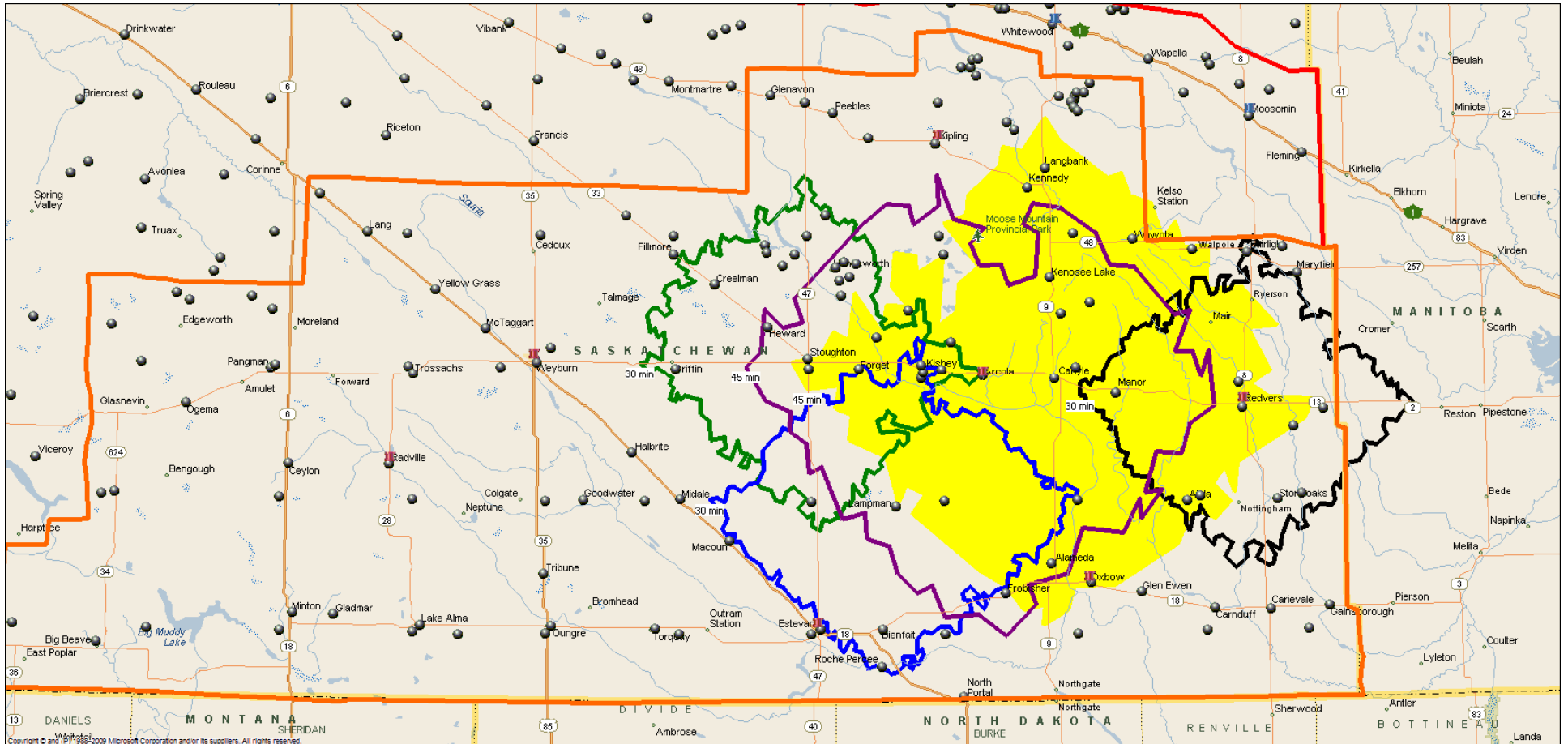
	Location	Colour
Hub	Arcola/Carlyle	Yellow/Blue
Spoke	Redvers/Oxbow/ Lampman/ Stoughton	Purple/Light Green/ Black/Green
Sub-Spoke	Carnduff	Light Blue

Notes:

Hub cities include a 45 min. Drive. All other drives are 30 minutes.

DRAFT Results – Confidential
- NOT FOR DISTRIBUTION -
 February 16, 2011

Southeast D: Arcola-Carlyle-Redvers



	Location	Colour
Hub	Arcola/Carlyle	Purple/Yellow
Spoke	Redvers/Lampman/Stoughton	Black/Blue/Green
Sub-Spoke		

Notes:
 Hub cities include a 45 min. Drive. All other drives are 30 minutes.

**DRAFT Results – Confidential
 - NOT FOR DISTRIBUTION -
 February 16, 2011**

Southeast D: Arcola-Carlyle-Redvers

- Estimated and Projected Population and Physicians -

Name	Hub-Spoke	Estimated and Projected Population					Estimated and Projected Family Practitioners				
		FY 2008	FY 2014	FY 2019	FY 2024	FY 2029	FY 2008	FY 2014	FY 2019	FY 2024	FY 2029
Southeast	Arcola45	2,661	2,602	2,576	2,552	2,502	2	2	2	2	2
Southeast	Carlyle45	4,076	4,024	3,964	3,881	3,771	3	3	3	3	3
Southeast	Lampman30	1,219	1,179	1,140	1,089	1,029	1	1	1	1	1
Southeast	Redvers30	2,779	2,660	2,549	2,428	2,300	2	2	2	2	2
Southeast	Stoughton30	1,478	1,436	1,400	1,366	1,330	1	1	1	1	1
Southeast	Total	12,212	11,901	11,629	11,316	10,931	9	9	9	8	8

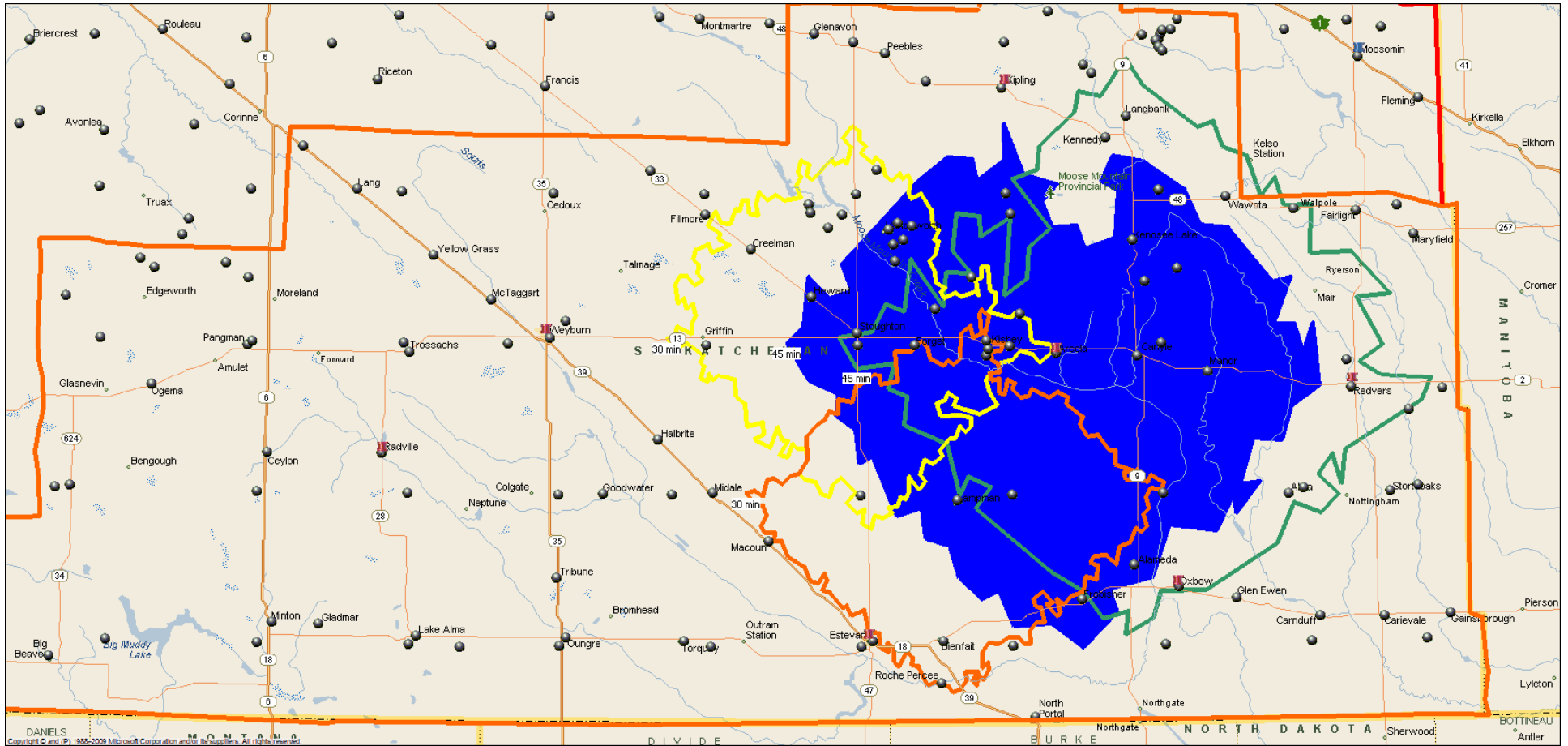
	Location	Colour
Hub	Arcola/Carlyle	Purple/Yellow
Spoke	Redvers/Lampman/Stoughton	Black/Blue/Green
Sub-Spoke		

Notes:

Hub cities include a 45 min. Drive. All other drives are 30 minutes.

**DRAFT Results – Confidential
- NOT FOR DISTRIBUTION -
February 16, 2011**

Southeast F: Arcola-Carlyle



	Location	Colour
Hub	Arcola/Carlyle	Blue/Green
Spoke	Lampman/Stoughton	Orange/Yellow
Sub-Spoke		

Notes:
 Hub cities include a 45 min. Drive. All other drives are 30 minutes.

**DRAFT Results – Confidential
 - NOT FOR DISTRIBUTION -
 February 16, 2011**

Southeast F: Arcola-Carlyle

- Estimated and Projected Population and Physicians -

Hub_Spoke	Pop08	Pop14	Pop19	Pop24	Pop29	MD08	MD14	MD19	MD24	MD29
Arcola45	1,429	1,418	1,424	1,432	1,429	1	1	1	1	1
Carlyle45	8,216	8,009	7,829	7,621	7,363	6	6	6	6	6
Lampman30	2,176	2,070	1,981	1,884	1,771	2	2	1	1	1
Stoughton30	2,429	2,325	2,234	2,135	2,024	2	2	2	2	2

	Location	Colour
Hub	Arcola/Carlyle	Blue/Green
Spoke	Lampman/Stoughton	Orange/Yellow
Sub-Spoke		

Notes:

Hub cities include a 45 min. Drive. All other drives are 30 minutes.

DRAFT Results – Confidential
 - NOT FOR DISTRIBUTION -
 February 16, 2011